

LIMESTONE COAST





Go below the surface on the Limestone Coast

A visit to a national park is more than a day out. They're gateways to connection with nature and cultural heritage. Create lasting memories with loved ones through hidden wonders above and below ground.

Discover hidden gems

Journey back 800,000 years at Naracoorte Caves, one of the world's most important fossil sites. Join a guided tour, unwind at the welcoming campground, or enjoy a break at the much-loved café.

With four caves to explore, the expansive park has something for everyone and even offers viewing platforms for those who prefer to stay above ground.

Travel south and experience the enchanting Tantanoola Caves, one of Australia's few accessible caves. View the spectacular array of formations and learn how they developed over thousands of years. Continue to Ewens Ponds and snorkel through the crystal-clear channels or grab your scuba gear and dive a little deeper to see the thriving plant life.

You'll find Little Dip Conservation Park, with coastal sand dunes and a ruggedly beautiful coastline perfect for nature lovers and families.

Plan your journey

Before you go, take some time to learn how to visit well and safely. You'll need to book at parks.sa.gov.au before you go for most tours, and the website also has information to inspire and inform your visit.

Discover more about accommodation, how to book online, and safety before you go at parks.sa.gov.au



FIS 1015926 | Image: Rhuang Alifaid



Contents

| | |
|----|--|
| 2 | Welcome |
| 4 | Experience |
| 6 | Explore |
| 10 | Outdoor adventure |
| 12 | Big nature & wildlife |
| 14 | Family fun |
| 16 | Wine, beer & spirits |
| 20 | Food |
| 22 | Somewhere to stay |
| 24 | Heritage & culture |
| 26 | Mount Gambier |
| 36 | Map |
| 38 | Kingston SE & the Coorong |
| 42 | Keith & Bordertown |
| 46 | Cape Jaffa, Robe & Beachport |
| 54 | Padthaway, Naracoorte & Lucindale |
| 60 | Coonawarra & Penola |
| 65 | Millicent, Port MacDonnell & Surrounds |
| 71 | Useful Information |
| 72 | Advertiser Index |

Acknowledgement of Country

The Limestone Coast region is located on the traditional lands of the Buandig, Bindjali, and Ngarrindjeri people. We pay respect to Elders past and present, recognising and respecting their cultural heritage, beliefs, and relationship with the land.

visitlimestonecoast.com.au
[#visitlimestonecoast](https://twitter.com/visitlimestonecoast)

Cover: Kilsby Sinkhole, Moorak
This page: Tantanoola

The official Limestone Coast Visitor Guide
proudly produced by



Welcome to our place!

You probably know us as a place of unspoilt beaches and brilliant seafood – and for good reason! After all, we’ve got 400 kilometres of wild and wonderful coastline.

But we’re much more than a beautiful coast.

We’ve got a huge country backyard, one that enjoys warm days and cool nights, perfect conditions for growing the region’s world-famous Coonawarra vineyards. Our rich farmland also raises golden grain, plentiful potatoes and fat cattle, including Australia’s highest quality, full-blood Wagyu. (With our premium lobster, the Limestone Coast can legitimately lay claim to serve the nation’s finest ‘surf and turf’...)

As for the ‘limestone’ in our name, this was formed 25 million years ago and underpins much of what makes our attractions so distinctive, including a legacy of caves and sinkholes. The 500,000-year-old Naracoorte Caves are World Heritage-listed for the wealth of megafauna fossils discovered in 1969. And divers come from all over for the unrivalled water clarity of our sinkholes, like Kilsby and Ewens Ponds.

Our towns tell remarkable stories. Penola was home to Australia’s first saint, Mary MacKillop. Robe was one of South Australia’s busiest ports in the 1850s. And the city of Mount Gambier truly deserves the epithet ‘unique’, sitting on the side of a dormant volcano and hosting one of the world’s most unusual inner-city gardens.

So, enjoy our sublime coast, but be sure to go a little deeper – you’ll be amazed at what you find.

Mundulla



Experience

Fathom the mysteries of the sinkholes

Free-diving fanatics and scuba-fiends love the crystal-clear freshwater sinkholes. There are more than 50 water-filled sinkholes, including the famous Kilsby Sinkhole, plunging 60 metres and renowned for glowing a luminous blue. If you prefer to keep dry, visit the Umpherston Sinkhole/Balumbul in Mount Gambier; this strange, magical, secret garden blooms in a 20-metre-deep natural well.



DiGiorgio Family Wines, Coonawarra

Embark on a walking wine tour in Coonawarra

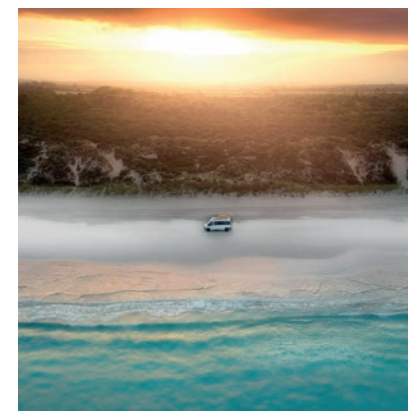
Meander on foot between six of the region's best wineries, stopping for tasting flights, grazing boards and views of sublime vineyards on the famed terra rossa soil. The route is just under five kilometres, the walk takes approximately three hours and best of all it requires no nominated driver! Famous Coonawarra Cabernet, anyone?



Blue Lake/Warwar, Mount Gambier

Explore an Australian volcano

Mount Gambier sits on a volcanic complex that is endlessly fascinating. Start with a visit to the Riddoch Arts and Cultural Centre for one of the daily cinematic showings of how the landscape was formed. Then see it for yourself with visits to the city's volcanic lakes, the incredible city sinkhole (Umpherston/Balumbul) and the honeycomb of caves beneath your feet (Engelbrecht Cave).



Little Dip Conservation Park

Discover the two sides of Robe

With its sublime beaches, interesting maritime history and busy fishing fleet, Robe has all the trappings of a picture-postcard seaside town. But there's another side to it. Wealthy visitors from Adelaide and Melbourne have helped to grow a cosmopolitan dining, drinking and shopping scene – one that blends boutique with barefoot.

Ewens Ponds



Southern Rock Lobster

Feast on fresh cray

The southern rock lobster is the region's most celebrated delicacy. Try it served thermidor on a restaurant platter or discover the real meaning of luxury – buy it straight from the fish factory, cook it up and eat it on the beach! Keep an eye out also for lobster croissant, cray pizza, lobster in scrambled eggs and lobster pies.

Explore



Kingston SE & the Coorong

The Coorong National Park runs from Kingston SE (the 'gateway' to the Coorong), 140 kilometres to the north. This uninhabited stretch of coast is an important ecosystem and a haven for migrating birds.

- Fish for Coorong mullet
- Go birdwatching on the saline lakes – home to more than 230 species of birds
- Explore the Younghusband Peninsula

See page 38



Cape Jaffa, Robe & Beachport

The fishing ports of Cape Jaffa, Robe and Beachport are popular holiday destinations, with generations of families returning year after year to enjoy the relaxed atmosphere and stunning beaches.

- Indulge in a little beachside chic at Robe
- Visit the local wine regions
- Explore the maritime legacies of historic fishing towns
- Enjoy southern rock lobster in season

See page 46

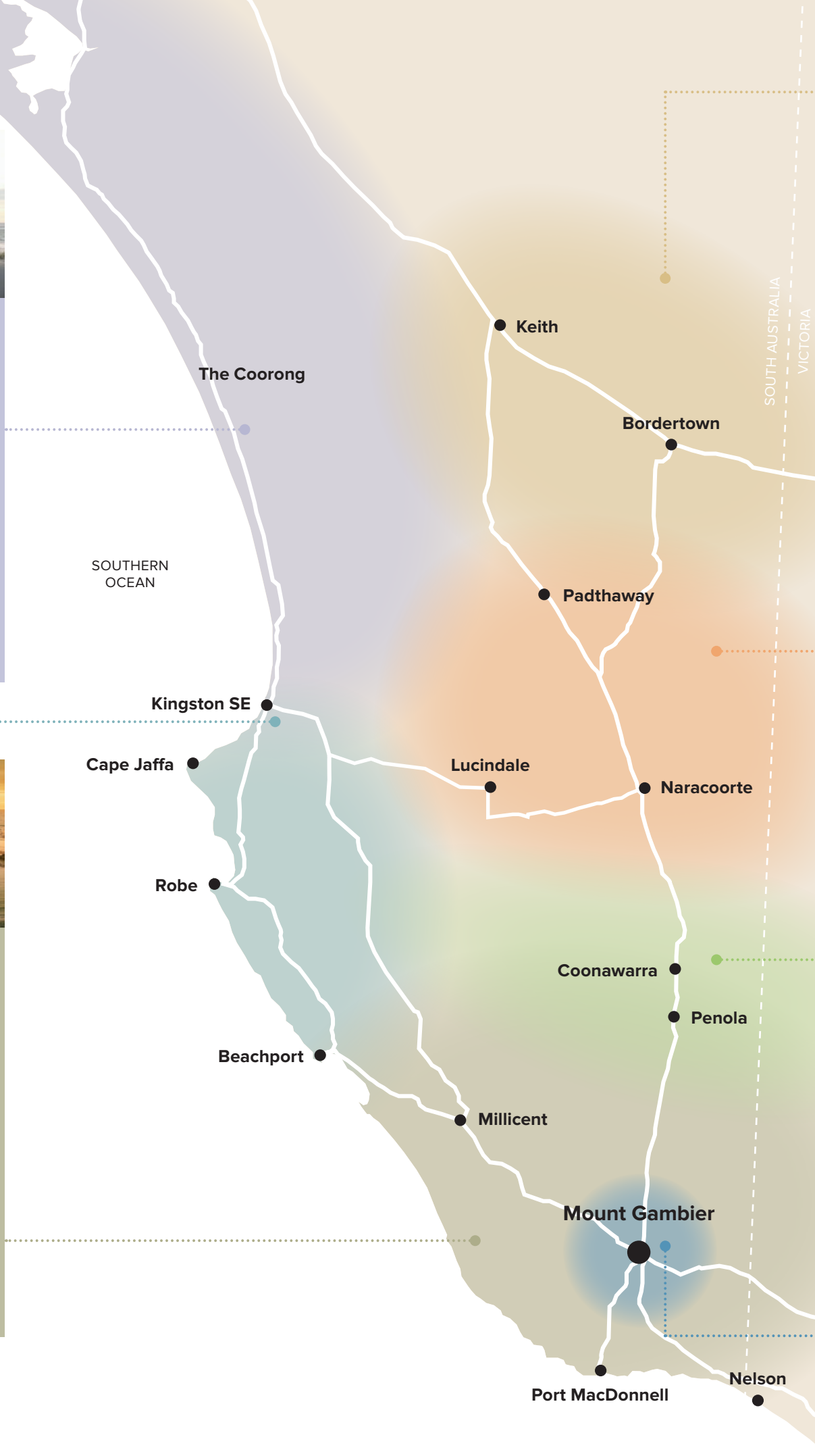


Millicent, Port MacDonnell & surrounds

The southern-most part of the Limestone Coast offers the perfect mix of time-honoured fishing villages (with plenty of cray boats), family-friendly attractions and a hinterland that's home to volcanic landscapes and sinkholes.

- Adventure on a fishing charter
 - Selfie at SA's southern-most point
- Climb Mount Schank
- Swim in a crystal-clear sinkhole

See page 65



Padthaway, Naracoorte & Lucindale

Immerse in a region famous for megafauna, wine and fine wool.

- Go underground and back in time to the days of marsupial lions at Naracoorte Caves
- Spend a day birdwatching at Bool Lagoon, a wetland of international importance
- Explore the history of wool growing
- Taste wines in and around Padthaway

See page 54



Keith & Bordertown

Both towns have a proud history as important rest-stops between Adelaide and Melbourne, serving travellers during the goldrush and the era of steam trains. They still extend a warm welcome and have interesting natural hinterlands that repay the curious traveller.

- See Prime Ministerial memorabilia at the Bob Hawke Gallery
- Climb Mount Monster
- Explore the Historic Drive
 - Camp in Ngarkat Conservation Park

See page 42



Coonawarra & Penola

This famed strip of terra rossa is not only a world-renowned wine region, it's also where Mary MacKillop began teaching poor children and started her journey to sainthood.

- Take a walking tour of Coonawarra wineries
- Dine, graze and taste at over 20 wineries
- Explore the life of Australia's first saint

See page 60



Mount Gambier

Mount Gambier is the region's largest centre and the second-largest city in South Australia. It sits close to the Victorian border, built around the slopes of a dormant volcano. This region is also home to famous sinkholes.

- Explore a dormant volcano!
 - Go beneath the city on a cave tour
 - Experience the magic of Umpherston Sinkhole/Balumbul

See page 26

Seven days in the Limestone Coast

DAY 1

From Adelaide, head to Taillem Bend on the South Eastern Freeway before making a spectacular seven-day loop that takes in the region's best attractions.

Take the coastal route on the Princes Highway to Meningie then travel alongside the **Coorong National Park**. This vast and precious system of saline lagoons is home to 230 recorded bird species, as well as signposted nature walks and campsites.

You'll know you've arrived at **Kingston SE** when you see Larry The Lobster, one of Australia's iconic 'big things'. Climb 125 steps at the nearby Cape Jaffa Lighthouse (now a museum) and you'll also get great views over the town's serene beaches. A good stop for lunch – especially if it's lobster season (October 1 to May 31). Head down to the jetty to Lacepede Seafood; there's also a terrific bakery in town.

Overnight Kingston SE or continue to Robe.

DAY 2 AND 3

Robe was once one of South Australia's busiest ports. The Robe Customs House explores this history, including the thousands of Chinese immigrants who landed here and walked to Victoria's goldfields. Today, it's a popular family holiday destination and enjoys a strong food culture, making it one of the best places to taste fresh seafood along with local coffee, wine and beer. The shopping scene is decidedly upmarket, too.

The stretch of coast between Robe and **Beachport** has some of South Australia's loveliest beaches including those in Beachport Conservation Park. Beachport Jetty, recently upgraded, is one of the longest jetties in South Australia, stretching out into Rivoli Bay.

If you're looking for still waters, head to the dunes on the edge of town where the hypersaline Pool of Siloam is the perfect spot for a gentle float.

Overnight in Robe or Beachport.

DAY 4

Heading inland, the **Millicent** Museum houses the Visitor Information Centre, a shipwreck room, a large machinery shed and arguably the best collection of horse drawn vehicles in Australia. Nearby **Tantanoola** lends its name to a cave system you can explore, as well as

Tantanoola

the Tantanoola Tiger, a classic piece of South Australian made famous by Max Harris' poem.

Near the Victorian border, **Mount Gambier** is most famous for the Blue Lake/Warwar, which is known for its evocative colours depending on the season (from a steely grey in winter to cobalt blue in summer). The limestone sinkholes that dot the region are amazing: Umpherston Sinkhole/Balumbul has been turned into a sunken garden, while the 47-metre-deep Little Blue Lake – 15 minutes south of Mount Gambier – is a public swimming area.

Head south towards the fishing village of **Port MacDonnell**, seeking out famous crystal clear sinkholes of Kilsby (where you can book ahead for a guided snorkelling tour) and the natural wonder of Ewens Ponds. Enjoy a sunset – and a cray pizza – at SA's southern-most point. Overnight in Port MacDonnell or Mount Gambier.

DAY 5

Loop inland to **Penola**, where Mary MacKillop founded the Sisters of St Joseph of the Sacred Heart (the Josephites), with an emphasis on education for the rural poor. In 1995, she was beatified by Pope John Paul II to become Australia's first saint.

The pretty town is full of Heritage-listed buildings and is easy to explore on foot. It's also an excellent base for visiting the **Coonawarra** wine region, famous for rich terra rossa soil that produces sought-after Cabernet Sauvignon.

Overnight in Penola or Coonawarra.

DAY 6

Further north in **Naracoorte**, you'll find South Australia's only UNESCO World Heritage Site at the Naracoorte Caves. Take a guided walking tour to see some of the extensive fossil collection of extinct megafauna, including marsupial lions and giant kangaroos. Alternatively, go deeper into the cave network on an exciting down 'n' dirty tour complete with headlamps and overalls.

Continue north on the Riddoch Highway directly through the **Padthaway** wine region and visit the Padthaway Conservation Park to see a remnant forest of gums, a haven for native wildlife. Climb the granite outcrop of Mount Monster for views over the surrounding bush and farmland and keep your eyes on the ground to discover a profusion of orchids in spring. Feeling thirsty? Wineries such as

Padthaway Estate and Farmer's Leap are ready to serve some fine local vintages.

Overnight in Padthaway or Naracoorte.

DAY 7

Rejoin the Dukes Highway at the small farming town of **Keith** before passing the famous silo mural in **Coonalpyn**; the five monochrome portraits of local boys were painted by Guido van Helten in 2017 and have been viewed by more than half a billion people online.

If you're heading to Melbourne, **Bordertown** is a perfect stop for refreshments; it's also home to the Clayton Farm Heritage Museum and the Bob Hawke Gallery.

Touring

You'll find touring companies operating out of Mount Gambier, Robe and the Coonawarra, Beachport and Port MacDonnell. All offer the convenience of tailored itineraries and the insights that can only come with living in the region.

Specialist tours include walking tours, golf tours, 4WD adventure tours, diving tours and (of course) wine tours.

In the Coonawarra, local wine guides can tailor a tour depending on your tastes or simply show you some of their highlights, quite often with access to the winemakers themselves for a view behind the scenes. Wine touring can be done by minibus or car; you can also do the Coonawarra Wineries Walking Trail by foot or bike.

The region's many national parks offer guided tours. Naracoorte Caves has a whole menu of specialist tours, including guided tours of Victoria Fossil Cave, as well as tours to encounter bat colonies and caves and participate in a range of adventure caving activities.

Guided Boat tours are available in Robe and Cape Jaffa. There are fishing charters in Port MacDonnell, including Extreme Marine Charters, Port MacDonnell Fishing Charters or Southerly Fishing Charters. For more on fishing, visit visitlimestonecoast.com.au/blog/fishing-in-the-limestone-coast/

Outdoor adventure

From disc golf to sinkhole diving – the Limestone Coast is home to some of Australia’s most unusual outdoor action attractions

Freshwater snorkelling, diving and swimming

The volcanic craters and sinkholes in the lower part of the Limestone Coast make for spectacular – and often surreal – swimming, snorkelling and diving experiences. Destinations like **Ewens Ponds** (near Port MacDonnell), **Little Blue Lake** and **Kilsby Sinkhole** (both near Mount Gambier) all offer crystal-clear fresh waters within bizarre geological formations. Ewens Ponds is one of the best freshwater dive sites in Australia, delivering visibility of up to 80 metres. Kilsby Sinkhole sits within a privately-owned paddock (pre-booking is essential!), where you can do a guided snorkelling tour with all the gear provided. Mount Gambier is home to a diving tour operator called Dive Experience. Further down the road is a dive shop called Allendale East General Store. It’s important to plan your sinkhole visits, as bookings are required to access some locations and slots are limited.

Golf

The Limestone Coast is home to a swag of golf courses stretching from Kingston SE to Mount Gambier. These include: **Naracoorte Golf Club** (18 holes and one of the top 100 public access golf courses in Australia); **Penola Golf Club** (a highly-regarded par 72 course); **Kingston SE Golf Club** (18 professionally designed holes between dunes and coastal rises); **Robe Golf Club** (18 holes uniquely located a few minutes’ drive from the main street); and **Beachport Golf Club** (nine holes near the caravan park). **Port MacDonnell Golf Club** has a nine-hole par 36 course.

Inland, you’ll find the **Mount Gambier Golf Club** (18-hole, par 72 course named in Australia’s top 100 courses); **Blue Lake Golf Club** (built on the southern side of Mount Gambier’s crater); **The Lucindale Country Club** (18-hole course with watered fairways and greens set in rolling dunes); and **Millicent Golf Club** (rated as South Australia’s best country course). The volunteer-operated **Bordertown Golf Club** is green all year.

Further north in Tatiara country, the long, narrow fairways of **Keith Golf Club** keeps players on their toes.

If you haven’t quite mastered your woods and your irons, try the **Crater Lakes Disc Golf Course** in Mount Gambier where you’ll be throwing a frisbee-like disc instead of whacking a ball. Discs can be hired from the Mount Gambier Visitor Centre. There’s also a brilliant local-themed 18-hole minigolf course; it’s part of the **Blue Lake Golf Club** in Mount Gambier, not far from the Blue Lake/Warwar.

4WD adventures

Limestone Coast is home to huge tracts of country which is open to 4WDing. The **Ngarkat Conservation Park** covers 270,000 hectares with trails through woodlands, heathlands and dunes; it’s also home to the well-known Border Track. **Coorong National Park** is a ribbon of wetlands, salt pans and dunes stretching 180 kilometres from the mouth of the Murray to Kingston SE, and 4WD is the way to access its remoter parts. There’s also 4WD options at **Long Beach** (12 kilometres of white sand) and **Little Dip Conservation Park** in Robe as well as **Canunda National Park** (45 kilometres of open beaches leading to fabulous walking trails, views and a shipwreck).

In and on the water

There are excellent surf breaks up and down the coast. They include: **The Dump**, **Third Ramp** of Long Beach in Robe; **Stony Rise** in Little Dip Conservation Park; **Post Office Rock**, **Surf Beach** and **Wooley Rock** near Beachport; and **Burdon Beach** near Southend. If you’re new to the sport, there are surf schools at Robe and Beachport. You’ll also find kayaking adventures on the Glenelg River and SUP tours from **Stillwater Paddleboards** at Beachport. Of course, there’s no shortage of fishing action to be had with great fishing spots off the beaches and jetties all the way down the coast. Fishing Charter Services are also available in Port MacDonnell and Boat Tours of Robe and Cape Jaffa are offered by **Limestone Coast Boat Tours**.

Exploring caves

Descending deep into the earth is always a thrill and the many chambers of the **Naracoorte Caves** go deeper than most! Naracoorte has a fabulous menu of activities, including a suit-up-and-get-dirty tour that will see you crawling on all fours. **Engelbrecht Cave** in Mount Gambier also does a brilliant deep-down tour; you might even see cave-divers in action...

Little Blue Lake, Mount Schank



Stillwater Four Wheel Drive Scenic Tours, Canunda National Park

Big nature & wildlife

Think you've seen it all? Then get ready for dormant volcanoes, marsupial lions, a turquoise lake and white kangaroos

Umpherston Sinkhole/Balumbul

Millions of years of weathering has left this 20-metre-deep well in the limestone. Sitting on the outskirts of Mount Gambier, the sinkhole was transformed into an astonishing garden in the late 19th century. The subterranean oasis is lush and green, and a cool respite in summer.

The Blue Lake/Warwar and Mount Gambier

The Blue Lake/Warwar is an icon and something of an enigma. It fills one of four craters of the dormant volcano that is called Mount Gambier. The lake changes colour, from a steely grey in the cooler months to bright cobalt blues in the summer. The volcano itself is estimated to have last erupted as recently as 4300 years ago; it's circled by a 3.6-kilometre road and walking track. There's an adjacent lake called Valley Lake/Ketla Malpi, which is best viewed from the walking track on the rim of the volcano; the grassed area has covered shelters, outdoor barbecue grills and picnic tables. Close by is the conservation park complete with gorgeous trails and lookouts. (Sorry, no dogs.)

Naracoorte Caves

World Heritage-listed Naracoorte Caves National Park is home to a series of caverns, some of which proved traps for unsuspecting animals roaming the continent 500,000 years ago. Visitors can enjoy the caves with a series of tours to see incredible cave formations, colonies of rare bent-wing bats and the remnants of marsupial lions and giant kangaroos. Adventure cave options are available for those who don't mind going deep and getting dirty. Great camping options here, too.

Tantanoola Caves

One of few wheelchair-accessible caves in Australia, Tantanoola is also one of the most spectacular. Discovered by a 16-year-old boy in 1930, it features spectacular stalactites and wedding cake formations that are as colourful as they are prehistoric. ForestrySA

has a self-drive forest trail, plus walks and tours. Pre-book an access pass.

Bool Lagoon

Bool Lagoon is one of the largest and most diverse freshwater lagoon systems in southern Australia. This seasonal wetland is home to a wide range of wildlife and provides essential drought refuge for many rare and endangered bird species. Take a drive to the top of Big Hill to see just how vast these wetlands really are. The boardwalk, extending 500 metres over the wetlands, gives you the feeling of walking on water.

Mount Schank

Mount Schank is a mystical dormant volcano located in the Mount Schank State Heritage Area, 10 kilometres south of Mount Gambier. The ash cone rises 100 metres above sea level and has strong connections to the Boandik people through oral history of giant ancestor, Craitbul. A two-kilometre walk around the rim provides a bird's eye view into the crater and over the surrounding farmland.

White kangaroos

Bordertown is home to Australia's only colony of white kangaroos, resident at Bordertown

Wildlife Park since the 1980s. Contrary to popular belief, these kangaroos are not albino, but a white strain of the western grey kangaroo. Stroll the perimeter of the park to see these striking marsupials among their western grey counterparts in a bushland setting.

The Coorong

The Coorong is a 180-kilometre stretch of saline lagoons fringed by vast dune systems. Though mostly wilderness (the 140-kilometre-long National Park was established in 1966) it has sustained the Ngarrindjeri people for millennia.

The vast Younghusband Peninsula beach that runs roughly north-south can be driven in its entirety using suitably equipped vehicles, however it can also be accessed by a series of entry points, mostly by unsealed roads heading off the B1. The park features a series of walking trails and scenic campgrounds found on both sides of the lagoons. The region is internationally significant as a migratory wader and waterfowl refuge, visited by some 230 species of birds.

Kingston SE is a popular gateway to the Coorong.



Naracoorte Caves National Park

Umpherston Sinkhole/Balumbul, Mount Gambier

Family fun

Limestone Coast knows just how to keep the kids sweet...

Watch camels being milked on a farm!

Get the kids on the Morning Milking Tour of Robe's Humpalicious Camel Farm. They'll see camels being milked, hand feed the babies and get to taste delicious camel milk gelato and milkshakes! The farm also offers a solar powered electric buggy camel safari: your guide will take you among the herd as they feed, providing some wild photo opportunities.

Meet George the Farmer

George the Farmer has been made popular though a series of kids' books. Now George has a brand new concept store in Penola (where he was born!). His shop is stocked with farm and educational products that can help educate and inspire the next generation of innovators, makers, fixers, creatives, teachers, policy makers and – of course – farmers.

Reach for the beach

While you're spoiled for choice when it comes to beaches, Robe and Beachport tick all the boxes for families. Robe's Long Beach and Beachport's Town Beach offer safe swimming, squeaky white sands and gentle lapping waters – everything you need to indulge in the joys of beach cricket, castle-building, shell collecting and even some boogie boarding if the grommets are up for it. If you've got a 4WD you can take them on an adventure on Long Beach, driving to the awesome Granites; these giant boulders have been smoothed by the sea for millennia, making an easy climb for little explorers at low tide. If you're staying in Robe, the Discovery Parks caravan park has an in-house nature park, with a double flying fox, hanging basket swings and a number of treehouses.

Love those lakes

Manmade Naracoorte Swimming Lake is seven times bigger than an Olympic pool, with lush lawns and an ankle-deep section for toddlers. Millicent Swimming Lake has a shallow beach, plus a pontoon for teens. There are many lakes to explore across the entire region. Walk the 500-metre-long boardwalk across the wetlands of Bool Lagoon or try your luck at yabbing at Cockatoo Lake Recreation Area. The Valley Lake/Ketla Malpi area in Mount Gambier

has a large playground and a conservation park to boot (no doggies allowed). Just out of town, strong swimmers and thrill-seeking teens will love Little Blue Lake, which is 40 metres wide and ringed by cliffs.

Plunge into Pools

Mount Gambier's **Wulanda Recreation and Convention Centre** is a state-of-the-art multipurpose facility with an indoor 25-metre pool, 50-metre outdoor pool, learn-to-swim pool and warm water program pool. There's also a children's splash pad complete with water slides and bucket dumps. An onsite café is ready for when tummies begin to rumble...

Penola is home to a five-lane, 30-metre heated pool, with toddler pool covered by shade sails. In **Nangwarry**, the pool is free of charge, with shades and a barbecue. The **Bordertown Swimming Pool** is also a hit with families, with an on-site playground, picnic tables and a novelty water feature for little tackers. There's also a solar-heated pool in **Keith**.

Go Kaboom!

Kaboom is a huge play centre in Mount Gambier complete with tenpin bowling, nine-hole indoor mini golf course and a two-level games hub called Gamezone (think air hockey, car racing and prize machines). It's open every day during the school holidays from 10am. Kids can also 'flip out' at the nearby **Flip Out Adventure Centre** – a place for climbing, bouncing and parkour.

Family fun in the winelands

Plenty of wineries in the region welcome families with play spaces and kids' menus. In Coonawarra, **Raidis Estate** has a safe and fully-enclosed lawn area where the kids can go free-range, as well as indoor and outdoor toys and 'Pizza and Tunes' days through summer. **Bellwether Wines** has an extensive produce garden and friendly farm animals, with a swing, treehouse and sandpit. At **Rymill**, there's a toy box for the little ones as well as options for fish-feeding in the front pond and plenty of lawns for ball games. **Balnaves** has kids' snack boxes and picnics

by the pond; **DiGiorgio Family Wines** has snack packs, lawns and outdoor toys; and **Brands Laira** offers pastries, platters, toy boxes and a play space.

All the excitement of caves

When you're a kid, is there anything more exciting than going underground? The sounds, the smells, the darkness, that weird temperature – and let's not forget fossils and the promise of marsupial lions...

At fabulous Naracoorte, young kids love the **Alexandra Cave Tour** (it's short and sweet at 30 to 40 minutes) and the **Fossil Hunters Playground**; the latter is an adventure playground complete with mini caves and fossils to discover. Older kids thrill to the **Bat Cave tour** and **Adventure caving**, when they get suited up to go crawling in the deeper, darker recesses. Other subterranean adventures await at **Tantanoola Caves Conservation Park**, **Umpherston Sinkhole/Balumbul** and **Engelbrecht Cave**. **Hell's Hole**, 20 kilometres from Mount Gambier, is a 'cenote', a sinkhole that extends into open water. It's also in the middle of a forest!



Robe Ice Cream

Long Beach, Robe

Wine, beer & spirits

Six wine regions and a swag of cellar door experiences? We'll drink to that

Cellar door experiences

There are dozens of cellar doors in the Limestone Coast (with 21 in the Coonawarra) offering tastings, wine sales, grazing plates – and occasionally something more.

In the Coonawarra, **Zema Estate** does privately hosted tasting experiences with a member of the Zema family; you can also purchase Mrs Zema's homemade chilli paste and olive oil from the cellar door. At **DiGiorgio Family Wines**, you can tour the ancient terra rossa and 100-year-old vines before sipping from the barrel and feasting on Nonna's meatballs. And at **Raidis Estate**, choose from a long lunch with winemakers (including a guided tasting) or chill out with one of the 'Pizza and Tunes' events.

At **Wynns Coonawarra Estate**, wannabe winemakers can live their dream with the Make Your Own Blend experience. And at **Bellwether Wines**, there's private tours and tastings, as well as an invitation to get hands-on with making sourdough and helping in the garden (where you can bag an armful of organic goodies for your next meal). **Katnook Estate** has history dating back to 1867 and a delightful stone cellar door with a 'terra rossa pit' illustrating how the famous soil influences flavour profiles. **Patrick of Coonawarra** does chocolate and wine tasting, with chocs from one of SA's finest chocolatiers, Red Cacao.

Leconfield's contemporary cellar door is part of the winery and offers hosted wine tastings. **Majella Wines** is one of Australia's most awarded small wineries; its celebrated vintages are offered at the substantial cellar door. And **Bowen Estate** is a classic family-owned small-production winery – they do just three varieties and have been serving wines for 40 years.

Cuvée-Co Wines have opened an outlet in Penola's Old Post Office (POPO!), showcasing winemaker Peta Baverstock's beautiful sparkling wines. Peta is behind many of the top-notch method-champenoise sparkling wines produced across the region.

Padthaway Estate and **Farmer's Leap** are near the small town of Padthaway, within a sub-region known for its fine wines.

In Robe, **Woodsoak** and **Karratta Wines** have their cellar doors in the main street. Sit at one of Woodsoak's tables on the main street to people watch, while enjoying tastings from the Indian bar wheeled outside daily (don't miss a glass of sparkling with a side of samosa!). Plus, they now have a courtyard out the back with a cute caravan serving cocktails in summer. At Karatta Wines and Gallery you can enjoy a wine tasting while browsing the highly regarded art gallery featuring local and global artists; there's also a new outdoor area with a lawn for lounging in the sunshine. Still in Robe, the town is home to the **Cantina** where Good Intentions Wines are shared (often accompanied by music and art). And in summer, you'll often find local wineries popping up in the local caravan parks for tastings.

Mount Benson Estate, midway between Cape Jaffa and Robe, prides itself on its Shiraz; visitors can find out more on a tour of the 'vineyard by the ocean' with tastings to follow. **Wild Game Wines** cellar door occupies a charming converted horse stable in Naracoorte; the venue hosts plenty of art and live music and opens onto a large grassed area with verandah.

For more insight into the wine regions as well as your own designated driver, don't go past a wine tour. **Coonawarra Experiences**, for example, offers half- and full-day wine tour experiences with lunch included. And if you're looking for a 'one-stop-drop' try a tasting at **Parker Estate**: you'll be offered wines, beers and gins, all made on-site!

It's not all about wine...

Maybe there's something in the water? Blessed with pristine, naturally filtered H₂O, the region has very happily turned its hand to making all manner of wine, gin and even a few hybrids of the two...

Craft beers: Robe Town Brewery is home to the only wood-fired brewing kettle in Australia. Grab a tasting paddle and a cheese platter

and go on the journey – there are some 30 beers to choose from in the tasting shed. **Loophole Brewing Co.** is co-located at Cape Jaffa Wines and uses water from a natural aquifer – expect some interesting wine hybrids like a beer infused with biodynamic Gewürztraminer. **Beachport Brewing Co.** is housed in the old fish factory next to the town's iconic jetty; the owners use their own wheat and barley for a genuine paddock to pint experience. **Woolstore Brewery** in Mount Gambier is housed in the middle of the Railway Lands precinct, with an awesome nature playground and public entertainment space close by (dogs welcome!); and **Little Rippa Brewing Co.** is a triple threat with delicious small batch beers, wood-fired dining and a rustic rural venue with awesome rural views.

Gin: Don't miss the region's growing number of gin producers. **St. Mary's Wines** in Penola has transformed their age-old vineyard into a gin-lover's sanctuary and managed to impress the judges' eye at the 2021 GinNation Awards and 2022 American Distilling Institute Awards. There's a surprise awaiting guests and visitors at **Robe Holiday Park**, where Robe Gin is winning plenty of friends. **Beachport Spirit Co.** has emerged out of Beachport Brewing Co. The winemakers at **Parker Estate** have turned their hand to create Cabernet and Rosé-infused spirits. And for a gin with a difference, there's **Sinkhole Gin**, made from the famous limestone-filtered waters of the Kilsby Sinkhole.

Others: Looking for something different? The region is now home to its very own spiced cane spirit and vodka. Mulligan's Rum and Mulligan's vodka are produced at **St Mary's** vineyard.

TRY CHOCOLATE AND WINE!

Experience the perfect pairing of artisan chocs and **Patrick of Coonawarra's** premium wines.

The Coonawarra cellar door also serves delicious produce platters on its luscious lawns.

See advertisement page 63

Robe Town Brewery

WELCOME TO THE COONAWARRA REGION

To view Cellar Door opening hours and to see what’s happening in Coonawarra visit coonawarra.org scan the QR code



Balnaves of Coonawarra (Outside)
15517 Riddoch Highway, Coonawarra
08 8737 2946
balnaves.com.au

Banks Thargo Wines
207 Racecourse Road, Penola
0408 828 312 or 0408 828 124
banksthargo.com.au

Bellwether Wines
14183 Riddoch Highway, Coonawarra
0447 334 545
bellwetherwines.com.au

Billy Brand Wines
61 Glenroy-Bool Lagoon Road, Coonawarra
0447 309 280 or 0408 838 447
billybrandcoonawarra.com.au

Bowen Estate (Outside)
15459 Riddoch Highway, Coonawarra
08 8737 2229
bowenestate.com.au

Brand’s Laira Coonawarra
14860 Riddoch Highway, Coonawarra
+61 8 8736 3260
brandslaira.com.au

Brand & Sons Wines
11 Mary Road, Coonawarra
+61 488 771 046
brandandsons.com.au

Bundalong Coonawarra
Pahl Road, Coonawarra
08 8205 3311
bundalongcoonawarra.com.au

DiGiorgio Family Wines
14918 Riddoch Highway, Coonawarra
08 8736 3222
digiorgio.com.au

Highbank Vineyards
0427 653 311
highbank.wine

Hollick Estates
11 Racecourse Road, Penola
08 8737 2318
hollick.com

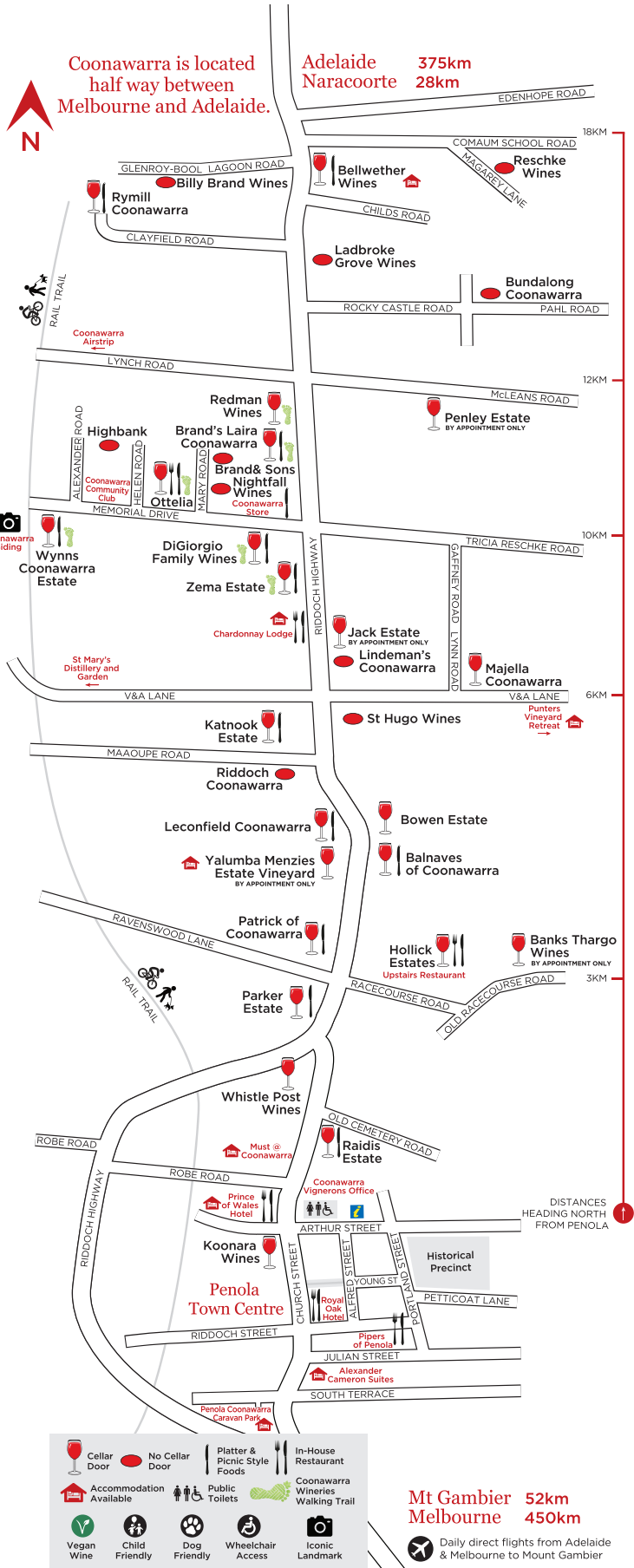
Jack Estate
15025 Riddoch Highway, Coonawarra
08 8736 3130
jackestate.com

Katnook Estate
15310 Riddoch Highway, Coonawarra
08 8737 0300
katnookestate.com.au

Koonara Wines
44 Church Street, Penola
08 8737 3222
koonara.com

Ladbroke Grove Wines
14487 Riddoch Highway, Coonawarra
0417 855 495 or 0401 054 225
ladbrokegrove.com.au

Leconfield Wines
15454 Riddoch Highway, Coonawarra
08 8737 2326
leconfieldwines.com



Lindeman’s Coonawarra
Riddoch Highway, Coonawarra
lindemans@lindemans.com.au
lindemans.com

Majella Wines
V&A Lane, Coonawarra
08 8736 3055
majellawines.com.au

Ottelia
5 Memorial Drive, Coonawarra
08 8736 3170
ottelia.com.au

Parker Estate
15688 Riddoch Highway, Coonawarra
08 8737 3525
parkercoonawarraestate.com.au

Patrick of Coonawarra
15598 Riddoch Highway, Coonawarra
08 8737 3687
patrickofcoonawarra.com

Penley Estate
McLeans Road, Coonawarra
08 7078 1853
penley.com.au

Raidis Estate
15741 Riddoch Highway, Penola/Coonawarra
0488 165 170
raidis.com.au

Redman Wines
14830 Riddoch Highway, Coonawarra
08 8736 3331
redman.com.au

Riddoch Coonawarra
Coonawarra
1300 721 920
riddochcoonawarra.com.au

Reschke Coonawarra
63 Magarey Lane, Glenroy
08 8362 6135
reschke.com.au

(Outside) **Rymill Coonawarra**
110 Clayfield Road, Glenroy
08 8736 5001
rymill.com.au

St Hugo Wines
Riddoch Highway, Coonawarra
1300 162 992
sthugo.com

Whistle Post Wines
15712 Riddoch Highway, Coonawarra
0404 191 919
whistlepost.com.au

(Outside) **Wynns Coonawarra Estate**
77 Memorial Drive, Coonawarra
08 8736 2225
wynns.com.au

Yalumba Menzies Estate Vineyard
15542 Riddoch Highway, Coonawarra
08 8737 3603
yalumba.com

(Outside) **Zema Estate**
14944 Riddoch Highway, Coonawarra
08 8736 3219
zema.com.au



Zema Estate, Coonawarra

The wine regions of the Limestone Coast

Coonawarra

A pocket of rich red soil has helped take the name ‘Coonawarra’ to all corners of the globe. This may account for why many visitors are surprised to find the Coonawarra wine region is actually quite small and easily toured. The parcel of famed terra rossa is home to two dozen cellar doors, many of them north of the gorgeous historic town that is Penola.

Padthaway

Established as a grape-growing region in the 1960s, Padthaway is now very much a wine producer of note, known for growing some of the finest Shiraz and Chardonnay in the country. There are two operating cellar doors, though you can also call ahead to arrange a tasting by appointment at an ever-increasing number of smaller producers.

Robe

The Robe wine region saw its first vines planted in the mid-1990s. The region’s vines

benefit from cooling breezes off lakes in the east and the Southern Ocean to the west, as well as wind protection from the nearby Woakwine range. Result? A long, cool, dry growing season that produces flavourful wines. Look out for three cellar doors in town, as well as local wineries popping up in the local caravan parks for tastings over summer.

Wrattonbully

Wrattonbully supplied an Adelaide Hills jam manufacturer with grapes back in the 1880s, however the region’s first wine grapes weren’t planted until the 1960s. In the 1990s, winemakers started to take notice of the elevated sites and excellent soils of the region; today Wrattobulley produces high-quality reds, with parcels owned by some of the country’s most prominent names.

Mount Benson

The Mount Benson wine region is one of the Limestone Coast’s newest official wine regions, with more than 600 hectares of vines and seven cellar doors. The moderate

climate, together with its loam-based terra rossa soils, produce premium Cabernet, Shiraz, Sauvignon Blanc and Chardonnay.

Mount Gambier

Established as a viticultural region in 1982 and with just 270 hectares under vine, Mount Gambier is a burgeoning region producing Pinot Noir and Chardonnay of note. Small boutique wineries, many of them family-owned, are springing up with cellar doors. They are open for tastings, some on weekends but most by appointment. In 2010, Mount Gambier become the latest G.I. to be included in the viticultural zoning for grapes.

Scan the QR code for more information on the Limestone Coast wine regions.





Food

Bring your appetite!

Local ingredients to look out for

Wagyu beef, local lamb and southern rock lobster. Still with seafood, try deep sea tuna, mullet, salmon, whiting and mulloway. And while you're here, don't miss our mushrooms – they're legendary!

Fine diners and local heroes

In Mount Gambier, **Elementary by Soul Co** is a destination restaurant for an intimate dining experience of locally grown produce paired with an international wine list; The Henty's restaurant **Noky** does great food (book ahead!) and the recently refurbished **Mac's Hotel** has some of the regions' best pub food. The **South Australian Hotel** has reopened after a 12-month hiatus – its new stylish spaces include 'the Blue Room', a moody, intimate setting with booth seating for small groups, and restaurant 'Seventy eight', with open kitchen and a seasonal menu.

Ottelia (Coonawarra) has a daily menu with local ingredients, including produce from the kitchen garden, prepared by head chef, Paul Stone. **The Caledonian Inn** (Robe) is celebrated for the seafood menu and the beachfront location. Foodies make a pilgrimage to Penola for two good reasons: St Mary MacKillop's town is home to **Pipers of Penola** (intimate, award-winning restaurant serving regional produce) and **The Royal Oak Penola** (a stunning old pub with lovely courtyard/beer garden and reliably good pub fare).

Land of the lobster

Treat yourself between October 1 and May 31, when many Limestone Coast cafés and restaurants start listing the much-loved local catch. Try **Salt Café and Bar** in Port MacDonnell (seafood platters with views over the foreshore so you can watch the cray boats coming in) or go high end at **Sails Restaurant** in Robe (book a day ahead). If you prefer to DIY, **Sky Seafoods** in Robe sells the catch of the day live and cooked, as does **The Lobster Pot** in Beachport. Don't forget to try a cray pie (**OK Pie Shop**, Mount Gambier), a cray pizza (**Bay Pizzeria**, Port

MacDonnell) or even Lobster chili scrambled eggs (**Tide Espresso Bar**, Port MacDonnell).

Where's the beef?

Mayura Station near Millicent is home to Australia's only full-blood Wagyu beef, which is hand-fed on all sorts of natural, flavour-enhancing exotica. On Thursday to Saturday, Mayura offers a four-course chef-prepared menu utilising the best cuts of Wagyu available on the day. Meat lovers on less extravagant budgets will find themselves brilliantly catered to at **The Barn Steakhouse** in Ob Flat near Mount Gambier and Port MacDonnell.

Graze beside the vines

Seek out a cellar door to while away a sun-filled afternoon. In Coonawarra, try **Rymill** (grazing platters, picnics and paired wines), **Brand's Laira** (soups, ploughmans and pastries in a gorgeous contemporary cellar door), **Ottelia** (cellar door and restaurant serving gourmet pizza) and **Raidis Estate** (platters for two in a lovely rustic winery). **Cape Jaffa Wines** in Mount Benson does local platters served out of a cruisy cellar door with vineyard views; and **Farmer's Leap Wines** in Padthaway does grazing boards plus monthly pizza and pasta nights.

Coffee culture

Limestone Coast has a buzzy bean scene, especially in Mount Gambier. In the big town, you're spoiled for choice but we can't go past **Bay Blue Espresso Bar** (home to some of the best brews in town), **Confession** (serving Latin American and Sumatran blends in a lush art-filled interior), **Bricks and Mortar Coffee Co.** (for your locally-roasted small batch brews) and **The Tuck Shop** (boasting a stellar hot chocolate).

Further afield, other faves include **Café Lito** in Penola (intimate on the inside, quaint on the outside), **Henry and Rose** in Keith (gorgeous interior and awesome homewares) and **Waterfront Café at the Jetty** in Beachport (with ocean views and a playground next door so kids magically

disappear...) Look out for the **Mahalia Coffee** brand across the region – roasted in Robe. Enough coffee? Try a hand-crafted organic tea from **Athella Tea** in Mount Gambier.

Look out for the Mahalia Coffee brand across the region – it's roasted in Robe. Enough coffee? Try a hand-crafted organic tea from **Athella Tea** in Mount Gambier.

Brilliant bakeries

Difficult to only name a few but here goes... In Mount Gambier, try **ScRoll Queen** for Australia's best scrolls; **Metro Bakery and Café** for time-honoured traditions where every croissant is hand-folded 60 times; and the **OK Pie Shop**, which is 70 years young and home to the crayfish pie (in season). In Robe, **The Pastry Place** does a crayfish croissant, **Rise of Robe** has a cult following for its Portuguese tarts and **Andy's Bakery** in Millicent offers mouthwatering treats such as Rhubarb pies and VoVo tarts. **Baked at Beachport** does delicious rhubarb scrolls as well as coconut, chocolate and raspberry macarons. The intriguing **Morning Loaf Bakery** in Bordertown is built over the old police station!

Kings of the road

The region is home to a lively (and lovely!) fleet of food trucks and vans, which are especially active in summer. Look out for the **Fat Mullet** food van around the region; run by chef Tobias Gush and caterer Emma Reeves, they serve restaurant quality food and local produce (including cray and mullet). Where will they pop up next? In Robe, look out for **Mike's Beef Jerky** and Beachside Bites, which does burgers and bacon and egg rolls. **Turk Bey** are often seen around Coonawarra and Naracoorte serving up Turkish street food. **Happi Belli Vietnamese** (Millicent) and **Nacho Average Taco** (Mount Gambier) are also popular. In Beachport, the **Lions Hot Donut** van is something of an institution, selling fresh hot cinnamon donuts and donating the proceeds to community projects.

Southern Rock Lobster

Somewhere to stay

Beach retreats, cool stays and great escapes

Luxe it up

Stony Rise Lodge is a contemporary retreat on the edge of Little Dip National Park, Robe. The four-bedroom property is beautifully appointed and can be fully catered if required. It's surrounded by bush with a track leading to a wild stretch of coast. Mount Gambier is home to **Delgattie Estate**, an elegant 1902 property with three private suites as well as a sumptuous dining hall, billiard lounge and outdoor entertaining area. **Church on the Hill** in Robe is an open-plan three-bedroom escape facing Front Beach and enjoying sweeping Southern Ocean views. And **Wrights Bay House**, tucked away in dunes near Mount Benson, enjoys uninterrupted sea views and access to a secluded beach.

Canvas and lakes

Bellwether Winery in Coonawarra has six luxury bell tents (with carpets, beds, cushions and throws) surrounded by 400-year-old gum trees, 1860s stone buildings and campfires. They serve their wines in a rustic shearing shed, they can arrange camp oven roasts on request and invite guests to help out in the herb garden. The **Coonawarra Bush Holiday Park**, north of Penola, offers lakeside family fun and a whole range of canvas options from glamping and eco-camping to its famous 'Bubble Tents' (geodesic domes with windows to the night sky). **Mountain Path Meadows** at Mount Schank, halfway between Mount Gambier and Port MacDonnell, has off-grid geodesic glamping domes.

Retreat to a winery

There are plenty of cute cottages and bonny B&Bs in the wine region, and let's face it, no-one likes to be the designated driver... Try **The Menzies Retreat**, Penola (contemporary accommodation amongst Yalumba vines); **The Winemakers House at The Blok**, Penola (a three-bedroom house tucked away in the vines and walking distance to many Coonawarra cellar doors); and **Padthaway Estate**, Padthaway (gracious old 1881 estate with self-contained Shearer's

Quarters and Lawson Cottage; the latter is the district's first permanent dwelling, dating back to 1847).

Mid-range accommodation

For quality hotel and motel accommodation, try **The Commodore** and the **Mount Gambier Hotel** (both in Mount Gambier offering superior motel accommodation with restaurants). **Comfort Inn The Lakes** enjoys an elevated position, excellent views and an indoor heated pool; and **Aloha** offers self-contained apartments.

Try also: **The Harbour View Motel** in Robe (with newly renovated rooms including top floor suites with harbour views); **Alexander Cameron Suites** in the centre of Penola; and **Naracoorte Hotel Motel** (complete with Billy Mac's Bistro).

The Avenue Inn in Naracoorte is a 4-star motel with a licensed restaurant; in the same town, **The William McIntosh** is across from the golf course and has 30 rooms and

a restaurant. At Beachport you'll find a twinned offering of **Bonnies** (serviced apartments) and **Bompas** (accommodation and restaurant); the latter has terrific views of the harbour. **The Somerset Hotel** in Millicent is part of the lively pub complete with affordable bar menus and a beautiful new bar.

Travelling light

There are caravan parks and campgrounds across the Limestone Coast, many of them ranged along the southern half of the coast. Be sure to book ahead before the school holidays. The Coorong has a string of unpowered campgrounds along its length, run by National Parks and costing \$18 a night.

Scan the QR code for more accommodation options.



Mountain Path Meadows, Mount Schank

Colhurst House, Mount Gambier

Heritage & culture



The Limestone Coast has stories to tell

Engage with First Nations culture

For at least 30,000 years, the Limestone Coast has been home to the Boandik, Bindjali and Ngarrindjeri people. Their culture and traditions are honoured throughout towns, national parks and forestry reserves by sharing their stories through interpretive signage and exhibitions. For an immersive First Nations experience, join a tour with Boandik elder, **Uncle Ken Jones**, for a cultural and foraging journey along the Port MacDonnell coastline. You can also purchase **Auntie Michelle's** digital story-telling self-drive map 'Growing Up On Boandik Country'.

Riddoch Arts & Cultural Centre

Mount Gambier's Riddoch Arts and Cultural Centre is a must, with local artists exhibiting alongside works of serious national importance. The state's foremost regional collection consists of over 1500 items, from paintings and prints depicting the people and history of the Limestone Coast to a significant collection of Aboriginal and 20th century Australian art. The Cultural Centre has regular free screenings of *Craitbul & Volcano*, a one-hour, big-screen experience that shows how Mount Gambier was formed, seen through both Aboriginal and European lenses.

Mary MacKillop Interpretive Centre

Penola is home of the Mary MacKillop Penola Centre. Canonised in 2010, Saint Mary of the Cross MacKillop forged her legacy of childhood education here, teaching out of a series of make-do shelters until founding the St Joseph's Schoolhouse in 1867. The Centre is adjacent the school and across the road from the old timber and stone cottages of Petticoat Lane.

Walkway Gallery & Bob Hawke Museum

The Walkway Gallery in Bordertown attracts national and state touring exhibitions, with household names taking centre stage alongside local legends. The Bob Hawke Gallery houses

a trove of Hawke memorabilia, from historic photographs and paintings to the legendary 1939 British Panther model 100 motorbike he crashed as a teenager.

Heritage walks

The towns and villages of the Limestone Coast are rich with history, which can be explored on self-paced walking trails. Stroll the streets of **Robe** for histories of early port life as well as more than 16,000 Chinese who landed here before walking to the Victorian Goldfields. On the **Kingston Heritage Trail**, explore 35 sites including the Cape Jaffa Lighthouse. In **Mount Gambier**, follow interpretive signs to see some of South Australia's oldest heritage hotels. **Walk the Limestone Coast** offers specialised walking tours including Taste the Aussie Camino pilgrimage, which explores landscape, history and the Mary MacKillop story.

Small towns, big stories

Built in 1863, the beautiful **Glencoe Woolshed** near Mount Gambier is a museum dedicated to the days of

hand-shearing using blades. Never converted to mechanised shearing, the old interior is as evocative as it is fascinating. The **Millicent Museum** surprises visitors with its size and diversity of its collections. It includes a shed housing a collection of restored buggies and carts, reputedly the biggest in Australia. The story of Millicent from pre-settlement times is in an adjacent complex and includes a shipwreck room, a machinery collection and beautiful period costumes. **Clayton Farm Heritage Museum** near Bordertown is on the former home of the Wiese family and consists of a group of historical thatched buildings and sheds, including the largest thatched structure in the Southern Hemisphere.

The **Port MacDonnell & District Maritime Museum** shares dramatic tales of how over 30 ships came to grief along the rugged local coast; you'll also find displays on little penguins (which dwell on the edge of town) and how this fishing village became known as 'Australia's southern rock lobster capital'. The newly upgraded **Port MacDonnell Community Complex Gallery** hosts regular art exhibitions.



Bush Adventures, Port MacDonnell

Glencoe Woolshed

Mount Gambier



MOUNT GAMBIER

South Australia's second-largest city sits on the side of a volcano, affording it membership to a rather exclusive club that includes cities like Naples, Auckland, Quito, Seattle and Reykjavik. The area was known as Berrin to the Boandik people for many thousands of years before it was sighted from the coast by British surveyors in 1800 and named Mount Gambier.

Mount Gambier was declared a city in 1954 and today it's home to a little under 30,000 people. Positioned halfway between Adelaide and Melbourne, it makes for a perfect base from which to explore the many attractions of the region.

The volcano hasn't erupted for more than 4300 years though it's no less spectacular for that, lending the city a remarkable topography and some extraordinary features found nowhere else. This includes the geological crater lakes, caves and sinkholes that have become integrated into everyday life.

Synonymous with Mount Gambier is the **Blue Lake/Warwar**, a water body that fills the volcanic crater on the southern edge of the city. The water can show as a vibrant cobalt or even turquoise blue from November to March, before transforming to a steely grey in winter – a phenomenon said to be caused by the formation of calcite crystals, in turn caused by the warming of the lake.

The nearly-round waterbody is almost a kilometre across and encircled by a road and walking track, with a number of viewing points.

The lake is part of the Crater Lakes Peri-Urban Park – home to four craters and two lakes – which provides a range of activities including walking, cycling, disc golf and an adventure playground, all set within this distinctive environment.

One of the city's most photographed locations is the remarkable **Umpherston Sinkhole/Balumbul**. Though set within the fabric of the city, the sinkhole is some 20 metres deep and rich with botanical gardens. These were first planted in the late 1800s as something of a Victorian curio. Today it's a must-see attraction. **The Cave Garden/Thugi** is another city sinkhole and provides a lovely picnic spot at what was once the water supply to the early settlers.



Blue Lake/Warwar, Mount Gambier



Umpherston Sinkhole/Balumbul, Mount Gambier

Got a day to explore Mount Gambier?

Wake-up call: Get an early start by walking the 3.6-kilometre track around the Blue Lake/Warwar – or perhaps play a round of golf on one of the city's two courses. Alternatively, just relish the unique experience of waking up on a relic volcano with a hit of caffeine: try **Bay Blue Espresso** or **Bricks and Mortar Coffee Co.** (Bit of Java amongst the lava?)

Breakfast: Fuel up with a hearty breakfast at any of Mount Gambier's cool cafés like **Presto Eatery**, **Confession** (awesome bacon and egg melts) or the **Metro Bakery & Café**.

Morning: The kids are spoiled for choice – let them go wild at **Kaboom, Flip Out** indoor adventure park or the **Railway Lands**. At Valley Lake/Ketla Malpi you'll find a conservation park, disc golf, nature walks and an adventure playground; there's also an awesome 18-hole minigolf course at the **Blue Lake Golf Links**. The famous Blue Lake/Warwar is a short drive away – and driving further south you'll find **ScRoll Queen** (yummy bakes), **Badenoch's Deli** (for ice cream) and **Good Intentions' Good Wine Bar Shop!** There's a great tour of Engelbrecht Cave, a labyrinth with an interesting history below the city streets. And don't miss the amazing Umpherston Sinkhole/Balumbul. Refuel with a mid-morning coffee at **Kahma Coffee and Donuts** or try **Athella Tea** which sources leaves to make in-house blends.

Lunch: Café Melzar and **Limestone Coast Pantry** are great lunch options, ready and able to prepare you for an action-packed afternoon!

Afternoon: Head onto Commercial Street to join the 4.5-kilometre circuit City Heritage Walk, taking in the city's most important buildings and plenty of stories along the way. (Brochure available from the Visitor Centre.) Make sure to leave time for the **Riddoch Arts and Cultural Centre** for the hour-long (free) screening of *Craitbul & Volcano* – a big-screen experience bringing ancient, Indigenous and European stories to life. And don't miss the very fine art collection.

Dinner: Dine at an historic pub, eat waterside at **Thyme at the Lakes**, try one of several excellent Asian restaurants or go upmarket at **The Barn Steakhouse!**

After-dark: Enjoy a pre-show cocktail before taking in a live performance at the multi-purpose arts centre, Sir Robert Helpmann Theatre.



Valley Lake/Ketla Malpi Conservation Park

Hidden away in a perfectly ordinary residential part of the city is **Engelbrecht Cave**. Behind a blink-and-you'll-miss-it entrance is a vast and quite surreal underworld. Join a 45-minute guided tour of the cave, descending 70 metres to see a beautiful underground lake. This is popular with cave divers who continue to explore the system; as recently as November 2022, a vast new cave was discovered beneath Mount Gambier.

This ancient landscape is explained at daily screenings of *Craitbul & Volcano*. Starting with the Aboriginal Dreamtime story of Craitbul and his giant ovens, this award-winning big-screen experience takes you through the spectacular history of eruptions that shaped Mount Gambier and the Kanawinka region. Screenings take place at **The Riddoch Arts and Cultural Centre** where heritage meets state-of-the-art technology to showcase natural and cultural treasures.



Bricks & Mortar Coffee Co, Mount Gambier

The Riddoch Art Gallery first opened in 1887 and today houses a collection of more than 1500 Aboriginal and European artworks; it also hosts touring exhibitions, runs public programmes and offers a gift shop with works by local artists. It sits adjacent to the Cave Garden/Thugi, right in the heart of the city.

Mount Gambier fosters plenty of fine jazz talent, stemming from the popular Generations in Jazz competition for young musicians. It's also the birthplace of Sir Robert Helpmann, and boasts a theatre named in his honour which hosts regular musical and theatrical performances.

While the city is easily explored on your own, joining a tour will prove more informative. Look out for the walking and cave tours or enjoy a pioneer farm experience. You can explore the city by bike with free hire available from the Visitor Centre and other locations, but for two-wheeled adventure look out for the

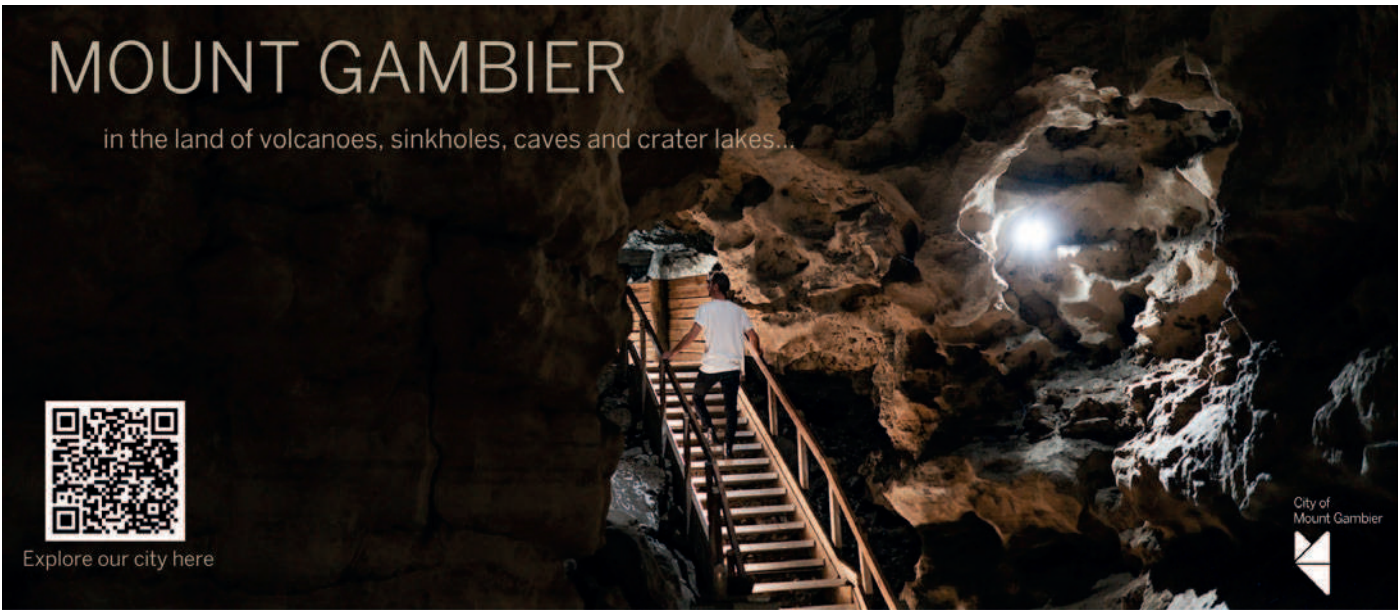


Mount Gambier City Centre

mountain biking trails. Golfers can take advantage of two golf courses.

There's a growing wine region on the outskirts of Mount Gambier with visits welcome by appointment. Look out for locally grown wines from **Haig Vineyard**, **Caroline Hills**, **Herbert Vineyard** and **Noski Wines**, along with gin makers (**Sinkhole Gin** is made with water from the aquifer supplying the famous Kilsby Sinkhole), soft drink producers and breweries including **Little Rippa Brewing Co.** and **Woolstore Brewery**. **The Farmers' Market** is a great way to discover more of the local produce which can also be found at everything from funky cafés to fine diners.

Accommodation options are many and varied, ranging from tourist parks offering campgrounds and cabins to self-contained apartments, motels and boutique hotels. Many are centrally located within a short distance of various attractions.





GRAB A SUPERPASS! \$25 EACH
2 BOWLING GAMES & MINI GOLF

4 Elizabeth Street, Mt Gambier 08 8723 2045
www.kaboomentertainment.com.au

TENPIN BOWLING
INDOOR MINI GOLF
GAME ARCADE
SNACKS & DRINKS
GIFT SHOP



WWW.FLIPOUT.COM.AU
(08) 8723 2045

99 PENOLA RD
MOUNT GAMBIER

Trading Cards
& Accessories
T-Shirts
Figurines
Board Games

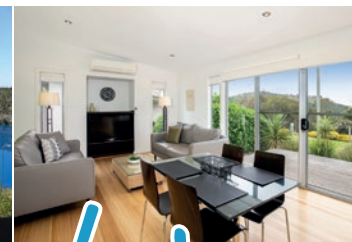


Toys & Keyrings
Backpacks
Funko Pops
Graphic Novels
Homewares



A SUPER GIFT FOR EVERYONE!

4 Elizabeth St, Mt Gambier 08 8723 2045



Blue Lake
holiday park

MOUNT GAMBIER SA

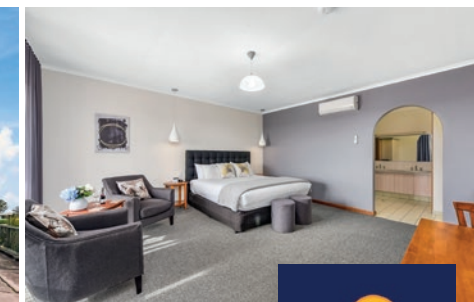


Bay Road, Mount Gambier
Phone (08) 8725 9856
Email: info@bluelake.com.au
www.bluelake.com.au

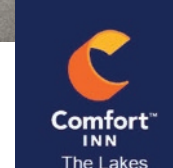
- Located on the edge of the famous Blue Lake
- Range of accommodation from budget cabins to luxurious Lakeside Villas
- Ensuite, powered and unpowered sites
- New indoor heated pool and water slides now open
- Barbecue and camp kitchen facilities
- Playground, jumping pillow, games room, tennis court
- New Limestone Lodge cabins now available
- Dogs welcome



COSY COMFORTS AND RELAXATION IN PICTURESQUE MOUNT GAMBIER



Comfort Inn™ The Lakes offers convenient, quiet accommodation just a short walk from Mount Gambier. Located on the edge of the Crater Lakes with spectacular views over the city, guests will enjoy easy access to South Australian treasures. Perfect for a weekend getaway or conference, Comfort Inn The Lakes provides peaceful and inviting rooms and suites.



Hay Drive, Mount Gambier P 08 8725 5755 E reception@thelakesmtg.com.au W thelakesmountgambier.com.au



A Caravan Park that feels different!

Family owned and operated, located in a beautiful country setting – yet only minutes from the centre of town and within walking distance to the famous Blue Lake.



- Luxury glamping tents
- 1 and 2-bedroom cabins
- Large drive-through ensuite and powered sites
- Dog friendly accommodation
- Large unpowered camping area
- Camp kitchen and barbecue area
- Kids playground and jumpy pillow
- Dedicated off lead dog paddock
- Fire pits available for hire – seasonal



www.pinecountry.com.au • E: info@pinecountry.com.au • 2-16 Kilsby Road, Moorak • P: (08) 8725 1899



the
G
mount gambier
HOTEL

Modern chic meets old-world charm!

Whether you're seeking classic luxury, country comfort, or a fun getaway with the family pet, 'The G' caters for all tastes. Indulge in mouth-watering local flavors and unwind with a brew in our bar.

Mount Gambier Hotel
Enquiries 8726 7000
2 Commercial Street West, Mt Gambier
mountgambierhotel.com.au
stay@mountgambierhotel.com.au
find us #mountgambierhotel



ACCOMMODATION | RESTAURANT | BAR | EVENTS

1 JUBILEE HWY EAST, **MOUNT GAMBIER** SA 5290
+61 8 8724 6400 | stay@thecommodoremtg.com.au
www.thecommodoremtg.com.au

COMMODORE

Favoured by locals, loved by travellers.

Experience the charm of The Park Hotel, an 1890 treasure in Mount Gambier. With three boutique

rooms, a cozy bistro and bar serving classic pub favourites, plus TAB and sports facilities, it's perfect for fami-

lies, couples and business travellers. Don't miss our Bottle Shop, boasting the town's best Coonawarra wines.

The
PARK HOTEL

163 Commercial St West
Mount Gambier SA 5290
info@parkhotel.net.au
parkhotel.net.au
(08) 8726 7500



Delgattie
ESTATE

LUXURY BOUTIQUE HOTEL | WEDDINGS | EVENTS

60 Penola Road, Mount Gambier SA 5290
+61 8 8724 6460 | stay@delgattie.com.au

www.delgattie.com.au

South Eastern Hotel is your 'go-to' destination for fun, family, and festivities right in the heart of Mount Gambier!

THE SOUTH EASTERN

Enjoy a game of pool, bet on the TAB or Keno in our lively front bar, or relax in our family-friendly bistro with our classic Aussie salad bar. The alfresco beer garden is perfect for enjoying summer days and the new kidszone playground will keep the little ones busy. We're dedicated to making your experience a memorable one.



South Eastern Hotel
P 8726 7700
235 Commercial Street East,
Mount Gambier
southeasternhotel.com.au

accommodation
bar dining
party

#atnoky @ the henty

+61 8 7725 4100
96 jubilee hwy east | **mount gambier** SA 5290

e. stay@thehenty.com.au | noky@thehenty.com.au
w. www.thehenty.com.au | www.noky.com.au

H
The Henty

noky.



ScRoll Queen
— A Taste of Royalty —
Est. 2018

Grab a ScRoll and coffee!

★★★★★
Made a detour driving ADL > MEL to revisit The Queen. These scrolls are out of control good. Simply delicious. 😍😍😍

★★★★★
Came all the way from Canberra and they were delicious. 🍌 Would highly recommend a stop over to indulge. 🍌

17a Crouch Street South, Mount Gambier
Text your orders to **0478 818 904**
scrollqueen.com.au 📱📧

Indulge in a tasty ScRoll and coffee at ScRoll Queen while you wait for your laundry to finish




Mt Gambier Laundry

- Ample parking for RVs and vans
- Self serve coin operated laundry
- Wash, dry, fold laundry service
- Private shower/toilet facilities
- Tap and Pay available
- Free Wi-Fi

17 Crouch Street South, Mount Gambier
Mob: 0439 822 511 www.mtgambierlaundry.com.au



**OPEN
5AM TO
MIDNIGHT
EVERY
DAY**



Apartments on Tolmie
Self-catering apartments

Two and three-bedroom options, each sleeping six to seven guests, ideal for business, couples and families. Fully-equipped kitchens and laundry. Spacious open plan living areas with heating and cooling, Wi-Fi, secure garages and private courtyard gardens. All linen and towels supplied. Coffee machines and tea selection.

27A Tolmie Street, Mount Gambier
Ph: (08) 8725 1429
Mob: 0419 140 188
Email: mail@apartmentsontolmie.com.au
www.apartmentsontolmie.com.au

BOOK ONLINE 📅
🐕 📶 📱



Motel Mount Gambier

A relaxing accommodation with friendly and courteous service. The rooms, facilities and extensive gardens are the perfect solution to your needs. We are the closest motel to the airport, shopping centre, Coonawarra wine region, CBD, major tourist attractions, restaurant and café. Just an hour away, some of Australia's most spectacular coastlines, fishing villages, wineries, national parks, forests, beaches and historic townships are waiting to be explored.

115 Penola Road, Mount Gambier
Ph: (08) 8725 5800
Email: motelmg@internode.on.net
www.motelmg.com.au

MMG 📱 📶



Limestone Coast
TOURIST PARK
MT GAMBIER, SOUTH AUSTRALIA

Scan the QR code to read online




LUXURY ACCOMMODATION AND AWARD-WINNING STEAKHOUSE

Chic and stylish King suites with stunning garden views. State-of-the-art fitness centre. Dine at The Barn Steakhouse where local beef is aged on the premises and cooked to perfection. Select from the award-winning wine list featuring aged Coonawarra classics.

747 Glenelg River Road, OB Flat (Mount Gambier) | Ph: (08) 8726 9999
Fax: (08) 8726 8097 | Email info@barn.com.au | www.barn.com.au

THE BARN



Mount Gambier Central Caravan Park

Located in the heart of Mount Gambier, a short stroll to cafes, restaurants and shopping. The Railway Lands bike and walking track is less than a minute away.

- Three-bedroom superior cabins
- One and two-bedroom ensuite cabins
- Powered and unpowered sites • Free Wi-Fi
- Camp kitchen with free barbecues • Laundromat

6 Krummel Street, Mount Gambier
Ph: (08) 8725 4427
Email: stay@mgccp.com.au
www.mountgambiercentralcaravanpark.com.au

Central Caravan Park



Echo Farm
Pioneer Farm Experience

Echo Farm offers a step back in time and an immediate sense of calm through interaction with a variety of farm and native animals. Our animals include goats, chickens, ducks, turkeys, pigs, emu, sheep, cat, dog, geese, cows, donkeys, guinea pigs and rabbits. An assortment of historic displays, combined with the old farmhouse museum, add to the charm.

Stroll around the old-style farm at your own pace on a self-guided visit; follow the farm trail, feed the animals, chat to the farmers and explore the old farm buildings. Allow an hour or two for your visit. We can also arrange a customised visit tailored especially for your group.

Visit our website for times and prices.

249 Tollner Road, Mount Gambier
Mob: 0481 574 663
Email: echo.farm.info@gmail.com
www.echofarm.com.au

📱 📶 📷

ECHO Farm
EST. 1980
EXPLORING - EXPERIENCE - ENJOY



Limestone Coast
TOURIST PARK
MT GAMBIER, SOUTH AUSTRALIA

- Wake to a relaxed, rural setting surrounded by trees, green grass and country air, yet minutes from the city.
- Ideal base to explore tourist attractions from beaches and sinkholes to caves and gardens or visit the wineries and go for scenic drives.
- Excellent facilities: community kitchen, games room, fast laundromat, barbecue pavilion/playground with comfort fires/firewood; pet-friendly park.
- Studio units (with ensuites) AND 1-3 BR brick units (with ensuites/kitchens).
- Caravan, campervan and tent sites with own ensuites, water and power.
- Wi-Fi in community areas PLUS now in front row ensuites and family units.

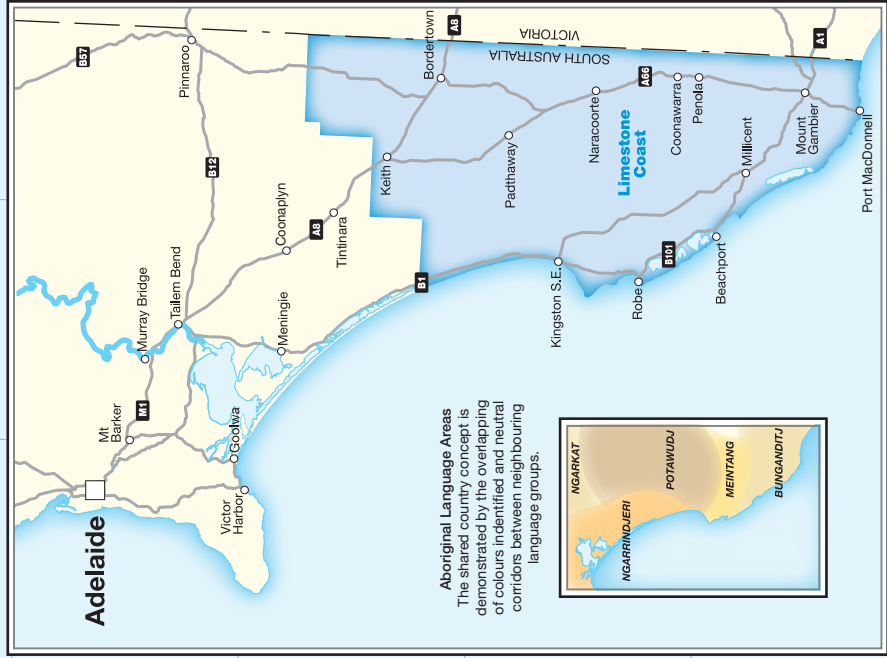
Corner Jubilee Highway East and Hawkins Road, Glenburnie
PO Box 477, Mount Gambier SA 5290
Ph: (08) 8723 2469
Email: info@limestonecoasttouristpark.com.au
www.limestonecoasttouristpark.com

📱 📶 📷



LIMESTONE COAST

Aboriginal Language Areas
The shared country concept is demonstrated by the overlapping of colours identified and neutral corridors between neighbouring language groups.



- Major Road - Sealed
- Secondary Road - Sealed
- Other Road - Sealed
- Other Road - Unsealed
- 4.W.D. Only
- Distances in Kilometres
- Route Marker
- Visitor Information Centre
- Visitor Information Outlet
- Airport/Airfield
- Bird Watching
- Boat Ramp
- Camping Area
- Caravan Park
- Cellar Door
- Dive Spot
- Ferry Service (24 hour)
- Fishing
- Golf Course
- Jetty/Boardwalk
- Lighthouse
- Marina
- Photo Opportunity
- Picnic Area
- RV Dump Point
- Surfing
- Whale Watching



Kingston SE & the Coorong



Coorong National Park



Kingston Foreshore Caravan Park

Right on the beach front at Kingston SE, on the calm shores of Lacepede Bay and a short walk from the town centre! The Kingston Foreshore Caravan Park has something for everyone. Choose from six accommodation options – well-equipped and comfortable one and two-bedroom cabins, powered or unpowered sites.

34A Marine Parade, Kingston SE
P: (08) 8767 2050
E: admin@kingstonforeshorecaravanpark.com.au
W: kingstonforeshorecaravanpark.com.au



Kingston RV Park

The Kingston RV Park is located on Marine Parade near the Jetty. Situated on the beachfront, the RV Park offers unpowered sites for a flat rate of \$20 for up to 2 days, with a maximum allowable stay of 6 days upon renewed purchase of a \$20 ticket.

Motor homes, caravans, camper vans, wicked vans and 4x4 campers all welcome.

Marine Parade, Kingston SE
P: (08) 8767 2033
E: info@kingstondc.sa.gov.au



Kingston Visitor Information Outlet

Opening Hours: 8.30am–5pm Monday to Friday. Visitor information can be obtained from the Kingston Foreshore Caravan Park on weekends. If you are looking for ideas on where to stay or things to do while in Kingston, drop in and see the friendly staff at the Kingston Visitor Information Outlet.

29 Holland Street, Kingston SE
P: (08) 8767 2036
E: vio@kingstondc.sa.gov.au
W: kingstondc.sa.gov.au



Lacepede Seafood, Kingston SE



The Big Lobster, Kingston SE



Meningie Information Hub

Situated on the shores of Lake Albert and adjacent to the beautiful Meningie Lions Park and playground. We provide a warm welcome for visitors and tourists seeking information on local attractions and accommodation. Learn about local history, heritage and culture, local natural environments including the internationally recognised Coorong National Park. Monday to Friday 9am–4:30pm. (Closed 12:30pm–1:30pm) Weekends subject to volunteer availability

49 Princes Highway, Meningie
Ph: 1300 785 277
Email: council@coorong.sa.gov.au
www.themurrayriver.com



KINGSTON SE

Located on the picturesque waters of Lacepede Bay and home to **Larry The Lobster** (who stands at an impressive 15 metres tall), Kingston SE is a laidback place as well as the gateway to the Coorong.

Enjoy days of fishing for salmon, bream and mullet, swimming in safe waters off white beaches and walking the town's picturesque tracks. After sunset, it's time to explore the cafés and restaurants, with plenty of local wine to accompany the brilliant local seafood.

If you're keen for an adventure, explore the district's many conservation parks, including **Butcher Gap**, **Mount Scott**, **Jip Jip** and, of course, the **Coorong National Park** just to the north.

Kingston is steeped in a colourful and interesting history. Take a self-guided walk on the town's **Heritage Trail**, taking in 35 sites including the **Kingston National Trust Museum** (you'll find artefacts rescued from shipwrecks) and **Cape Jaffa Lighthouse** which offers regular tours and spectacular views.

For an altogether different experience, visit the lovely **Wind Dance** mural and watch it come to life on your smartphone courtesy of an app and the magic of augmented reality.

Kingston SE now has electric vehicle charging stations located near the jetty/foreshore area.



THE COORONG

The Coorong is a spectacular and complex piece of coastal and wetland wilderness that runs 180 kilometres south from the mouth of the River Murray to Kingston SE. The Coorong National Park – which comprises the saline lagoons – was established in 1966 and stretches 140 kilometres.

The name 'Coorong' is derived from an Aboriginal word 'karangk' meaning narrow neck and is the traditional lands of the Ngarrindjeri people. The lake system is separated from the Southern Ocean by sand dunes of the Younghusband Peninsula and is internationally significant as a migratory wader and waterfowl refuge.

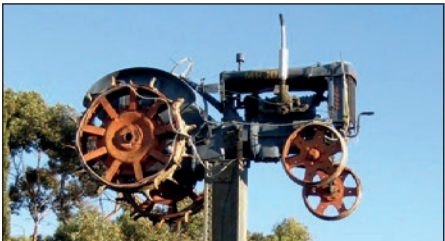
The Coorong's distinctive landscape is ideal for birdwatching and photography and is an important breeding area for the Australian pelican as well as more than 230 migratory birds that travel annually from Siberia, Alaska, Japan and China.

The park can be explored by the various walking trails, by paddling waterways in a kayak, or by 4WDing along designated tracks and the beach.

There are 20 scenic campgrounds along the length of the Coorong; none are manned, a few are suitable for 2WD vehicles and caravans (access is via unsealed roads off the B1 highway), others are accessible only by 4WD. Bookings are required and fees must be paid before entry.

The northern gateway to the Coorong and Limestone Coast is **Meningie**, which was established as a staging post serviced by paddle steamers. Today the town offers fishing, boating, skiing, walking trails and fabulous sunsets. Meningie Hill Lookout provides views over Lake Albert and the surrounding pastoral properties, while a wetland bird sanctuary is a haven for the many birds also seen in the Coorong. An interpretive path along the waterfront highlights the diverse history of the region.

There are a number of excellent drives along the shores of Lake Albert and the Coorong. You can also do a loop south along the Coorong, heading out on Narrung Road toward the unsealed but well-graded Seven Mile Road.



Kev's Kollection Vintage Tractors

Kevin and Audrey Geue welcome you to come and view over 190 vintage operational tractors, some 70 stationary engines, assorted farm equipment, antiques and domestic memorabilia on display.

8 Princes Highway, Kingston SE
Mob: 0408 398 061

DISCOVER KINGSTON SE

Local starts here! Your information guide and online directory to **Shop, Eat & Drink, Stay, Experience, Enjoy, Service & Play Local Kingston SE & Cape Jaffa.**



Amali Gifts Kingston

We are a lifestyle store with a little bit of everything for men, women and children, shop online or instore.

- Clothing & accessories
- Jewellery
- Homewares & giftware
- Bags & Wallets
- Casual Shoes
- Swimwear, activewear and workwear

19 Agnes Street, Kingston SE
Ph: 0474 793 698
amaligifts.com.au



Bliss By the Sea

Indulge in the delights of our café, where you can savour the rich aroma of a freshly brewed coffee, cool off with a refreshing drink, or delight in a delicious breakfast or light lunch. Treat yourself to our array of housemade cakes and slices. Conveniently located near the RV Park and shopping precinct, we're open 7 days a week to serve you. Dine-in or ready to go in minutes.

3 Hanson Street, Kingston SE
Ph: 08 8767 3182
blissbythesea.au



Cape Jaffa Holiday Park & Kiosk

You deserve some Cape Time! Enjoy the serenity of an unhurried getaway, suitable for families, couples or travellers looking to explore the southern region of the Limestone Coast. Choose from our array of accommodation options, from standard and ensuite cabins or enjoy the freedom of powered or unpowered sites.

Revel in the ease of our on-site kiosk and bottleshop, where you can enjoy a variety of offerings—from coffee and cold drinks to ice cream, gas, fuel, and even bait and fishing tackle.

- Additional Park Features
- Camp Kitchen & Fire Pit
 - Children's Playground
 - Cray Cookery
 - Dog Friendly (All year round)
 - Close proximity to Beach & Jetty

18 King Drive, Cape Jaffa
Ph: 08 8768 5056
capejaffaholidaypark.com.au



Sandy Grove Dog Boarding Kennels

Providing indoor/outdoor dog boarding accommodation. Our seaside country setting offers fresh air, play and exercise activities to suit your furry family member's personality and ability. We welcome dogs for boarding, overnight sleepovers, the weekend slumber party or a longer vacation.

Offering comprehensive grooming services for your furry friends and facilities to suit their individual needs.

Southern Ports Highway, Kingston SE
Ph: 0457 738 809
sophia@sandygrovekennels.com



Beach Noms

Nestled in the heart of Kingston SE, we're your go-to destination for delicious bakery treats, café favourites and takeaway delights. Grab and go or enjoy our indoor or outdoor seating.

Come join us and indulge in the simple pleasures of beach living. Life's a beach, so why not make it delicious, nom..nom..nom.

41-43 Holland Street, Kingston SE
Ph: 08 8767 2727
beachnoms.au



Dewberry Home

Discover the perfect blend of charm and uniqueness at our retail giftwares store. From stylish home decor and on trend collections to quirky novelties and timeless keepsakes.

- Homeware
- Furniture & decor
- Fashion
- Jewellery
- Baby wear & toys

34a Agnes Street, Kingston SE
Ph: 08 8767 2355



Our Destination is 9

A beachfront home that has been designed with holidaying in mind. The house boasts an open plan living area that is warm and welcoming.

- Sleeps 9
- 2 x Queen Rooms & 1 x Bunk Bed Room
- Alfresco area, table & BBQ
- Outdoor hot & cold shower
- Fully enclosed backyard
- Pet friendly

9 Marine Parade, Kingston SE
ourdestinationis9.com.au



The Candy Store & Cafe

Where Childhood memories are created and relived with our wide range of confectionery, chocolates & treats. Serving scoops of feelings, you can eat with our selection of Golden North & Everest ice cream. Enjoy time with family and friends over a relaxing coffee, smoothie or milkshake paired with our housemade cakes, biscuits and slices or stay for a light lunch or cooked breakfast from our extensive menu.

2-4, 48 Agnes Street, Kingston SE
Ph: 08 8767 2063



Megz Hair Times

Hair and beauty salon for the whole family.

- Cuts & colouring (colours, foils & toner)
- Wash, blowdries, perms & upstyles
- Waxing
- Spray tans
- Brow and lash tinting
- Wedding & event styles
- Ear piercing

11 Gough Street, Kingston SE
Ph: 08 8767 2694



Royal Mail Hotel

Your pub by the beach. The Royal Mail Hotel, has been serving thirsty and hungry locals and travelers since 1857.

- Fresh seasonal menu
- Cold beer, local wine & cocktails
- Coffee & cake
- Courtesy bus
- Pokies (Gamble Responsibly)
- Drive thru Sip 'n' Save bottleshop
- Pub accommodation

10 Hanson Street, Kingston SE
Ph: 08 8767 2002



- Family owned and operated
- Lunch & dinner served daily - dine in, alfresco, takeaway or home delivery (Conditions Apply)
- Online ordering & accommodation booking
- Cold beer & local wine
- Sip 'n' Save bottleshop
- 19 clean and comfortable hotel rooms
- TAB, pokies & lotteries (Gamble Responsibly)
- Courtesy cruiser & off street parking
- Live music during summer

31 Agnes Street, Kingston SE • Bookings & Accommodation (08) 8767 2005

crowninnkingston.com.au/order-online



- Newly renovated rooms
- Family rooms
- 24 hour contactless check-in
- Pet friendly (book direct)
- Swimming pool & BBQ
- Guest laundry
- Free Wi-Fi
- Free parking (room for boats)

Book Now

4 Princes Highway, Kingston SE

lobstermotel.com.au

stay@kingstonlobster.com.au

08 8767 2322

FOR MORE INFORMATION VISIT: discoverkingstonse.au

Keith & Bordertown



Poocher Swamp



KEITH

On arrival in Keith be sure to look up where you'll see (what else?) a Land Rover sitting atop a pole. The quirky monument commemorates investment in vast new areas of farmland near Keith during the 1950s; it was undertaken by the AMP Insurance Company which contributed to the growth of the town. Earlier histories are told in the **Keith National Trust Museum** with displays in a former Congregational Church and a small 1894 cottage – **Early Settlers Cottage** – on Emu Flat Road.

The kids will enjoy a run-around on the playground and a ride on the monorail train; there's also a lovely walk to be had on the golf course.

For 4WD and dirt bike riding action or a camping experience, head out to **Ngarkat Conservation Park**, **Mount Monster** or **Jip Jip Conservation Park**. Walk to the top of Christmas Rocks near **Willalooka** for the best views over the district.

Mount Monster Conservation Park is 12 kilometres south of Keith and known for an unusual granite outcrop called Mount Monster. A short hike to the summit offers uninterrupted views over the granite outcrops, natural bushland and the flat agricultural land extending into the horizon. An interpretive self-guided walk around the base of the granite outcrop reveals some of the secrets of 'the monster'.

Don't miss **Henry & Rose Café** in Keith. This long-time favourite is a gorgeous period cottage serving awesome coffee and food; it's also a florist and sells very fine homewares. And take a small detour to find **Purple Paddock**: this community-run shop is an outlet for local makers and producers – a great place to find home bakes, home-grown goodies and unique pieces of locally made craft.

COOL POOL!

Blue Lake Holiday Park has 27 acres of gardens set within Mount Gambier's amazing volcanic landscape. Families love the park's brand new indoor heated pool with kiddy bubble pool and waterslides!

See advertisement page 31



Walkway Gallery, Bordertown



BORDERTOWN

Bordertown has been a service centre for travellers since the 1850s gold rush. Today it's an ideal stopover on the modern version of the Gold Escort route – the Dukes Highway – which follows the path originally taken by the police troopers who delivered gold to Adelaide.

This local history is on display at the **Clayton Farm Heritage Museum**. The life and achievements of Bordertown's most famous son, former Prime Minister Bob Hawke, are brought to life at the **Bob Hawke Gallery**.

You'll find the work of artists from the region at the **Walkway Gallery** in the **Tatiara Civic Centre**. The collection is supported by an art prize open to all Australian artists. For more creative works, walk the **Public Art Trail** to discover sculptures, murals, ceramics and leadlight.

The town has a series of walking trails with nature reserves and a white kangaroo wildlife park nearby. **Poocher Swamp**, set

among old red gums, is a known yabbing hole and picnic spot.

Spare a couple of hours to take the **Tatiara Historic Drive**. Starting at the **Bordertown Visitor Centre**, the 50-kilometre round trip includes 14 places of interest explaining the history of the region. Highlights include the Clayton Farm Heritage Museum and lunch at the historic **Old Mundulla Hotel**. This district is known for some of the state's best farming land and the town of Mundulla hosts the Stockman's Challenge and Mundulla Show each March. Follow the self-guided **Moot Yang Gunya Swamp Walk** to see abundant birdlife and unique flora and fauna.

Nearby **Wolseley** was once a bustling railway town where the narrow gauge line met the broad gauge from Melbourne. The fuel storage tanks camouflaged as farm buildings built by the RAAF during World War II can still be seen. Find out more on the self-guided **Historical Walk**.

Finally, be sure to visit the **Tatiara Works Centre** in Bordertown. Established in 1968, it provides a retail store for locals to sell their homemade and homegrown produce. Check it out for seasonal food (including yummy fresh bakes!) and clever handiwork – a lovely spot to stop and support local.



105 On The Park Motel

Perfect stopover at the gateway of the Limestone Coast or your holiday in SA.

- Quiet location opposite Memorial Park
- Well-appointed ensuite rooms
- Tea and coffee, fridge, microwave and toaster
- Clean, air-conditioned rooms
- Free Wi-Fi

105 Park Terrace, Bordertown
Ph: (08) 8752 0922

Email: bookings@105onthepark.com.au
www.105onthepark.com.au



The Bordertown Hotel

Next time you're travelling between Adelaide and Melbourne, come and enjoy the wide verandahs and friendly atmosphere of The Bordertown Hotel.

Providing comfortable accommodation, a bistro and restaurant, gaming and a friendly country pub atmosphere. We also have Saloon Bar, drive-in bottle shop, Sky, TAB, Keno and pool tables.



79 East Terrace, Bordertown
Ph: (08) 8752 1016



Henry & Rose Café

The place to be to enjoy coffee, breakfast and lunch with family and friends! Our kitchen is open til 2pm, however our front fridge is stocked with delicious sweet and savoury foods, as well as gluten free and vegan options. If you are travelling, we recommend calling ahead to place your coffee and food orders, or use our app.

Monday to Friday 8:30am–4pm
Saturday and Sunday 8:30am–3pm

15 Heritage Street, Keith
Ph: (08) 8755 1061
Email: henryandrose15@gmail.com
www.henryandrose.com.au



Bordertown Caravan Park

• (08) 8752 1752 • 41 Penny Terrace, Bordertown



Our friendly team look forward to welcoming you to the beautiful Tatiara region!

- Accessible and Pet Friendly Cabins
- Spacious Drive-Through Sites
- Shops and Local Attractions Just a Short Stroll Away



www.bordertowncaravanpark.com.au



43 Woolshed Street, Bordertown P: (08) 8752 1044 E: office@tatiara.sa.gov.au | tatiara.sa.gov.au • visittatiara.com.au



Keith Hotel Motel

- Drive through Sip'n Save Bottle shop with an extensive wine range
- Front bar with three gaming machines and TAB facilities
- Separate dining room for lunch and dinner
- Online ordering for meals
- All meals available to takeaway
- 17 machine gaming room
- Accommodation
- Dog friendly beer garden
- Open seven days



2 Makin Street, Keith
Ph: (08) 8755 1122
Email: admin@keithhotel.com.au
www.keithhotel.com.au



Clayton Farm Heritage Museum

A visit to Bordertown would not be complete without spending some time at Clayton Heritage Farm Museum. Just three kilometres from the town centre, the Museum has a restored and refurbished homestead and a comprehensive range of vintage farm machinery where you can experience farm life as it was more than a century ago.

147 Clayton Farm Track, Bordertown
Mob: 0417 890 868
Email: claytonfhm@internode.on.net
www.visittatiara.sa.gov.au



Walkway Gallery

Located in the Tatiara Civic Centre the Walkway Gallery supports work of local Tatiara (and Limestone Coast) artists and arts organisations, as well as giving visitors the opportunity to engage with important work by significant and established artists. Education and public programs, including kid's art classes are aligned with the exhibitions program.



43 Woolshed Street, Bordertown
Ph: (08) 8752 1044
Email: gallery@tatiara.sa.gov.au
www.walkwaygallery.com



Cape Jaffa, Robe & Beachport



The Obelisk, Robe



CAPE JAFFA

At the southern tip of Lacedpede Bay, Cape Jaffa has a residential marina, boat launching facilities and is home to a commercial fishing fleet. During the warmer months, with its protected sandy beaches and clean seas, the area is perfect for swimming, walking, diving, fishing and exploring the history of the area. For stunning ocean views, visit the Bernoulli Conservation Reserve and Lighthouse Cottage Ruins near the headland.

Lovers of fine wine can indulge at one of the three cellar doors of the Mount Benson Wine Region, located between Kingston SE and Cape Jaffa. **Loophole Brewing Co** behind Cape Jaffa Wines is a great place for a cold one, with a scenic deck and lawned area.



ROBE

Robe has been a favourite holiday destination with South Australians and Victorians for decades.

The historic town sits at the southern end of Guichen Bay. It was a bustling merchant port in the 1850s, when tall ships came into anchor and trade, the major export at the time being wool. The earliest form of lighthouse, the iconic Obelisk, made of paddock limestone and painted in red and white, sits on Cape Dombey; it has been guiding captains through bands of marine reefs into shore since 1855. The town became famous as an entry-point for more than 16,000 Chinese gold-seekers. Intending to avoid Victoria's punitive £10 tax imposed at Port Melbourne, they landed at the closest South Australian port and then walked the 400 kilometres to the goldfields.

FRESH AND FABULOUS!

Upgraded and renovated, Robe's **Harbour View Motel** offers home comforts, ensuite rooms and a harbourside location. There's a penthouse suite and café, too!

See advertisement page 48



Limestone Coast Boat Tours

A memorial can be found near Robe Customs House Maritime Museum.

Today, Robe is known for its rugged coastlines, sandy beaches and freshwater lakes. It's also a thriving town with the main street increasingly celebrated for its lively mix of cafés, pubs and restaurants, boutique shops and art galleries.

The food and drink scene has always been strong thanks to its stellar seafood (including lobster, of course) as well as fine coastal-climate wines. But it's increasingly spilling onto the pavement and into courtyards. Mexican-inspired **West Beach Cantina** ensures the margaritas (and burritos) flow, while new **Olives Pizza** is a little slice of Italy with an outdoor courtyard surrounded by limestone walls; meanwhile the bar scene has been boosted with **Black Swan** serving up cocktails, while **Karratta** and **Woodsoak** cellar doors add to the party atmosphere.

Robe also has an interesting industrial area, which has seen a surge in unique retail

BEST OF COUNTRY AND SEA

Stay, play and dine at the legendary two-storey **Robe Hotel**. This waterside favourite serves up sensational views as well as pub menu favourites and a classic country pub atmosphere.

See advertisement page 49

BEACH LIVING!

Just one street back from the beach, surrounded by coastal bushland and dunes, **Southern Ocean Tourist Park** is also right next to the bright lights of Beachport!

See advertisement page 53

businesses. Check out **Mike's Beef Jerky**, **Mahalia Coffee** roasting house, **Robe Town Brewery** (Australia's only wood-fired brewery), and an award-winning couple who turn bread tags into bowls at **Transmutation**.

Town attractions include fishing at the marina, visiting **Humpalicious Camel Farm** and a fine golf course. You can drive your car on the 12-kilometre Long Beach (to find a spot to call your own!) or go 4WDing to explore the fabulous coves and coastline of Little Dip Conservation Park. Cycle the coastal and inland bike trails or take a guided tour with **Tracx**. You can also change the perspective with **Limestone Coast Boat Tours**: they'll show you the town from the water and include a visit to see a colony of fur seals and sea lions at Baudin Rocks.

Be sure to visit **Robe Visitor Information Centre** to pick up a coastal trail brochure, a guide to the heritage buildings and information relating to dining, fishing and a tasting trail.

Mount Benson Estate is a premium producer of wines with a particular focus on Syrah and Cabernet Sauvignon. Additionally we produce Rose, Sauvignon Blanc and Chardonnay. A Halliday 5 Star rated winery, our attention is on delivering high quality cool climate wines.

Come taste and buy our wines, while you're here view our gallery, hosting the works of Archibald Prize winning artist W.B. McInnes and others. Our Café serves very enjoyable tasting platters and Flammekueche to enjoy with your wine tasting or sitting back enjoying the ambience of the vineyard setting.

90 seat venue in an operational vineyard
WEDDINGS • RECEPTIONS • FUNCTIONS • CONFERENCES • SPECIAL OCCASIONS

Summer: Opening 10am–6pm most days • Winter: Opening 11am–4pm Friday–Tuesday (closed July), other times by appointment.

329 Wrights Bay Road, Mount Benson • Bookings: Brian 0417 996 796 / Carolyn 0418 992 715
e: sales@mountbensonestate.com • www.mountbensonestate.com.au • f @mountbensonestate



DINING
LIVE MUSIC
BEER GARDEN
FUNCTIONS
ACCOMMODATION

1 VICTORIA ST, ROBE, SA
08 8768 2029
WWW.CALEDONIANINNROBE.COM.AU



A LITTLE MOTEL WITH BIG DREAMS KEPT IN ROBE, THE HEART OF SOUTH AUSTRALIA

Whether it's a night in one of our renovated queen rooms or a weeklong getaway in our brand new 'Penthouse', you'll feel at home here at the Harbour View, in the picturesque town of Robe.

Free Starlink WiFi | Free parking | Smart TV's |
Onsite cafe | 5 Minute walk to front beach,
shops and Restaurants

Book direct and quote **HVM10** for 10% off your booking

2 Sturt Street, Robe
M 0456 702 750 E info@robeharbourview.com.au
W robeharbourview.com.au



Spacious, quiet, & family friendly accommodation
located five minutes from Robe's Town Centre

Corner Main and Nora Creina Road, Robe SA

M 0488 727 269 W robeholidaypark.com.au

E stay@robeholidaypark.com.au



ROBE ¹⁸⁴⁶ HOTEL BISTRO | BEER GARDEN | LOCALS PUB | ACCOMMODATION

Modern bistro and locals pub with a long established heritage as one of the region's oldest.
On the menu you'll find pub classics, local seafood and the best of South Australian produce.
Accommodation with rooms overlooking Robe's iconic picturesque beach.

6 MUNDAY TERRACE, ROBE. BOOKINGS AT ROBEHOTEL.COM.AU



South Australia's favourite seaside town



ROBE.COM.AU



Robe Visitor Information Centre

Make the Robe Visitor Information Centre your first stop for:

- Tourist information, brochures and maps
- Information about local events and activities
- Souvenirs, gifts, local product and artwork
- Public computer
- Free Wi-Fi
- Public library, with dedicated kids area

Opening hours:
Monday to Friday 9am–5pm
Saturday and Sunday 10am–2pm
Public holidays 10am–1pm
(Hours may vary in peak and low seasons)

Opp. the Foreshore, Mundy Terrace, Robe
Ph: (08) 8768 2465 Freecall: 1300 367 144
Email: visitrobe@robe.sa.gov.au
www.robe.sa.gov.au/explore

District Council of **ROBE**
Public Library and Visitor Information Centre




Humpalicious Camel Farm

Morning Milking Tour: Watch the camels being milked, hand feed the babies, taste camel milk and indulge in delicious camel milk gelato, milkshakes, and more!

Solar Buggy Camel Safari: The electric buggy safari is a great group activity. Be amongst a large herd of excited camels! Try delicious camel milk products.

Book all activities at www.humpalicious.com.au

46 Roys Lane, Mount Benson
Mob: 0423 893 541
Email: humpaliciouscamelmilk@gmail.com
www.humpalicious.com.au




Lakeside Tourist Park

Quiet and peaceful park on the shores of Lake Fellmongery, offering accommodation and grassed sites. The park office is within the Heritage-listed Stables with its unique "Pug & Post" floor. Lakeside offers the perfect respite from a hectic lifestyle. Pets welcome (seasonally) on sites. Pet cabin available by booking direct with the Park.

24 Main Road, Robe
Ph: (08) 8768 2193
Email: info@lakesiderobe.com.au
www.lakesiderobe.com.au

BOOK ONLINE




CARAVAN PARK

• ROBE •

- Absolute beach frontage with direct access onto the beach
- Magnificent view overlooking the bay
- Prime location in the township of Robe
- Grassed terraces • 23 Cabins • 100 sites • Large camp kitchen

1 Squire Drive, Robe • Phone: (08) 8768 2273
admin@seavucaravanpark.com.au • www.seavucaravanpark.com.au




Our recently renovated 17 ground floor units have reverse cycle air-conditioning, flat screen TV, microwave, toaster, and free wireless internet.

Perfect for a couple or a family getaway. The Robe Black Swan Tapas Bar is located on the premises and is an excellent place to satisfy that hunger or just have a coffee.



THE GUICHEN

BOUTIQUE ACCOMMODATION

Boutique accommodation in the centre of Robe

42 Victoria Street, Robe
P 08 8768 2001
E info@guichenbaymotel.com.au
W guichenbaymotel.com.au



**ROBE TOWN
-BREWERY-**



GREAT ATMOSPHERE
WIDE SELECTION OF BEERS
LOCAL WINES AND SPIRITS
LIVE MUSIC EVERY WEEKEND



10 WHITE STREET, ROBE, SA



WWW.ROBETOWNBREWERY.COM.AU



Robe Nampara Cottages

The Robe Nampara Cottages are located just minutes from the historic Robe township and a two-minute walk from Robe's popular Long Beach.

The cottages have two bedrooms with kitchen/living/dining area, reverse-cycle air-conditioning and bathroom.

Ideal to take a break for a longer stay or an overnight stop.

28 Laurel Terrace, Robe
Ph: (08) 8768 2264
Email: bookings@robenamparacottages.com.au
www.robenamparacottages.com.au




Beachport Brewing Co

Located in an old Fish Factory opposite Beachport's famous 772-metre-long jetty, Beachport Brewing Co blends artisan craft and everyday drinkability to produce refreshing beers featuring malt from the owners' locally grown barley.

Inside still has a raw industrial feel and beers are now brewed where southern rock lobsters used to be stored in holding tanks.

5 Beach Road, Beachport
Ph: (08) 8784 0808
Email: hello@beachportbrewingco.com.au
www.beachportbrewingco.com.au



Also onsite is Beachport Spirit Co, producing refined gins featuring local botanicals.

Come by for a beer or gin tasting paddle and enjoy the best ocean views on the Limestone Coast.





BEACHPORT

Enjoying sweeping sandy beaches, rugged coastal scenery and a quiet atmosphere, Beachport makes a perfect base for exploring the region. Many attractions are within 60 minutes' drive, including Mount Gambier, Robe, Penola and Coonawarra.

Beachport is home to South Australia's second-longest jetty, a popular spot for anglers to land a tasty catch. Ask a local about the southern rock lobster catch, a regional delicacy that's easy to come by in season (October 1 to May 31). This is also a great place to see migrating southern right whales.

Other activities include surfing, swimming, paddleboarding, kayaking, boating, walking trails and golfing. Fancy a 4WD tour of the coastline? Take a Stillwater 4x4 Scenic Tour.

The Bowman Scenic Drive follows the coastline, passing points of interest including Cape Martin Lighthouse, Penguin Island, Post Office Rock and Cowrie Island.

It also takes in the **Pool of Siloam**, a highly saline lake that renders swimmers extra-buoyant and is said to have therapeutic properties; the pool has a picnic area.

Marvel at an amazing feat of human ingenuity and persistence at the **Woakwine Cutting**, 12 kilometres from Beachport. Undertaken in 1957 to drain land behind the Woakwine Range and increase agricultural opportunities, the cutting is said to be Australia's biggest one-man engineering project. The cutting and machinery can be seen from a viewing platform.



Pool of Siloam, Beachport



Coastal Treasures

Coastal Treasures is located in the beautiful seaside town of Beachport. Pop in and discover our huge range:

- Clothing • Sterling Silver • Jewellery • Scarves
- Beads • Hair Accessories • Hats • Shoes
- Pink Poppy Children's Range • Handbags

Open every day 10am–4pm*

*Winter hours subject to change



18b Railway Terrace, Beachport

Ph: (08) 8735 8010

Email: coastal_treasures@bigpond.com

www.coastaltreasures.com.au



The Lobster Pot – Beachport

The Limestone Coast Fisherman's Co-operative (LCFC) is proudly owned and operated by local South East SA fishing families and is a processor and exporter of premium southern rock lobster. Come and say hello and try our world-class product today, fresh from 'The Lobster Pot', our shopfront in Beachport.



3 Beach Road, Beachport

Ph: (08) 8735 8454

Email: thelobsterpotbeachport@gmail.com

www.facebook.com/thelobsterpotbeachport/



Beachport Caravan Park & Surfside Apartments

Located between the golf course and beach

- Four fully self-contained apartments with ocean views (one wheelchair friendly)
- Two ensuite cabins, four standard cabins
- Self-contained beach house (sleeps 12)
- 18 beachfront powered sites
- 100 powered grassed sites
- Camp kitchen
- Games/recreation room
- Free electric barbecues
- Children's playground
- Modern amenities
- Modern laundry
- Pets welcome at manager's discretion (powered sites only)

Ph: (08) 8735 8128

Email: contact@beachportcaravanpark.com.au

www.beachportcaravanpark.com.au



BONNIES LUXURY ACCOMMODATION

★★★★★ ACCOMMODATION

BONNIESOFBEACHPORT.COM M 0408 482 899



Bompas 1878 Cafe & Accommodation

bompas.com.au • 0438 414 784 • Cafe: 08 8784 0804 •



BEACHPORT'S MOST SHELTERED PARK



Surrounded and sheltered by beautiful coastal bushland and within walking distance to the beach.

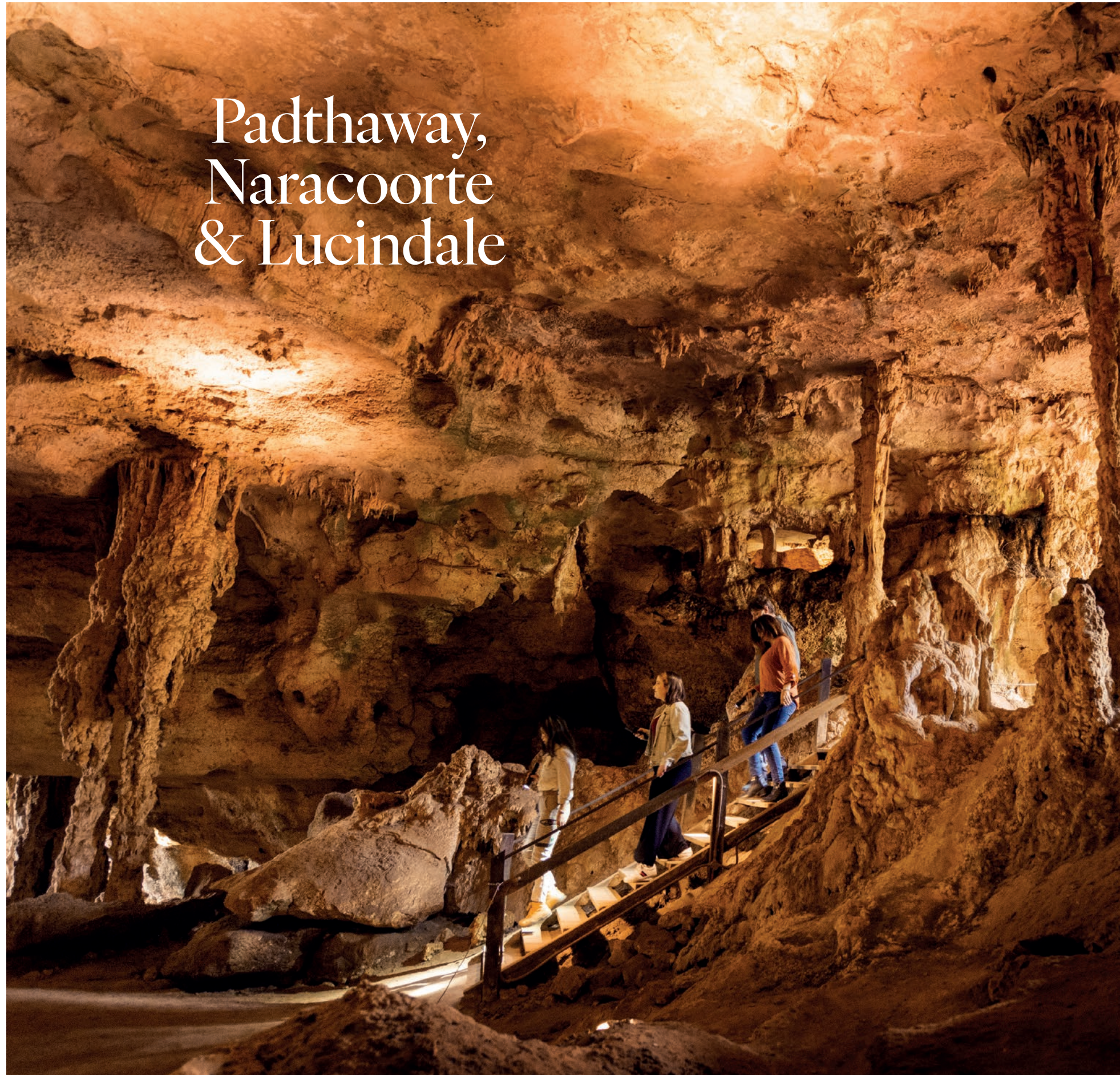
This is the perfect place to relax and unwind in unspoilt natural beauty, which is centrally located within the township.

Come and experience our brand new recreation room with indoor and outdoor cooking facilities including a pizza oven and a large deck area to sit and enjoy a drink, while making memories.

- Everything you need is within walking distance
- Large, sheltered and shady grassed sites
- Free Wi-Fi
- Breathtaking views from villas and cabins
- Pets permitted (off peak)

Somerville Street, Beachport P (08) 8735 8153 E sotp@bigpond.net.au W southernoceantouristpark.com.au #bestparkinbeachportsotp

Padthaway, Naracoorte & Lucindale



Naracoorte Caves National Park



PADTHAWAY

The thriving and picturesque village of Padthaway is situated on the Riddoch Highway, 60 kilometres south of Keith. The surrounding wine region – which also bears the name – was first planted with grapes in the mid-1960s and now boasts thousands of hectares of vineyards stretching as far as the eye can see. The fruit finds its way into iconic labels that have become household names.

In the centre of town is **Apex Park**. It offers picnic facilities where you can enjoy your purchases from the nearby shops, as well as barbecues; the kids will enjoy the playground and skatepark.

Down the road is the majestic **Padthaway Homestead** which was built in 1882. It's home to **Landaire Wines** where the famous 'Eliza' is produced on Australia's only traditional French Cochard champagne press. Travel just four kilometres south of the township and you'll find the architect-designed **Farmer's Leap Cellar Door**, where you can taste fine wines and delicious food or just relax with a coffee.

Golfers can enjoy wonderful views over the vines while playing the nine-hole course. Birdwatchers are drawn to the **Padthaway Conservation Park** where kangaroos and koalas are also commonly seen.



NARACOORTE

A visit to the World-heritage **Naracoorte Caves** is a must. One of the world's best fossil sites, this is a place where marsupial lions, enormous kangaroos and giant monitor lizards are preserved by layers of ancient sand. Take a guided tour and see life-size recreations of Australia's extinct megafauna.

Experience the Scottish heritage and historic buildings of the town, including the striking Georgian building in Ormerod Street which is home to the **Naracoorte Regional Art Gallery**, a showcase of traditional and contemporary visual arts. **The Sheep's Back Museum** is housed in an 1870s flour mill and tells the stories of the Australian wool industry and its people. For one of the many uses of wool, visit **MiniJumbuk** where you can view the production of their world-class woollen bedding products.



Padthaway Caravan Park

Peaceful – Vintage – Beautiful

A picturesque drive through the vineyards of the renowned Padthaway Wine Region leads you to the tranquil setting of the Padthaway Caravan Park.

Offering a relaxing setting for our guests.

• Country hospitality • Picturesque, quiet setting, surrounded by vineyards • Modern, clean amenities • Lawn sites

• Modern cabins • Mini golf • Campfire (in season)
• Free gas barbecue • Electric car chargers
• Local wines available

Padthaway Estate is located 400 metres from the Caravan Park. Please check facebook page for opening hours.

75 Beeamma Parsons Road, Padthaway
Ph: (08) 8765 5212 Mob: 0412 546 792
Email: relax@padthawaycaravanpark.com.au
www.padthawaycaravanpark.com.au





Bool Lagoon

Set in glorious grounds, the **Naracoorte Swimming Lake** is a huge man-made lake with shallow sections for the littlies, deeper sections for lane swimming, a diving pontoon and an enclosed children's area. Walk, run or cycle the various self-guided trails around Naracoorte and explore the town's natural wonders, abundant wildlife and rich history. There's a trail for everyone, from the 30-minute walk through the native bushland of the **Naracoorte Nature Park**, to the 14.7-kilometre-long **Naracoorte Caves Trail** which connects the town of Naracoorte with the world-renowned caves. The nearby **Wrattenbully Wine Region** produces wines of great flavour and intensity which can be found at most local pubs and restaurants. **Bool Lagoon**, 25 kilometres south of town, is a wetland of

international importance, serving as a summer refuge for migratory waders.



LUCINDALE

Every year, Lucindale plays host to the **South East Field Days** which attracts members of the agricultural community from across the state and beyond. Visit the **Lucindale Historical Society Museum** to see a collection of restored local buildings and displays curated by the descendants of the community's pioneering families. The museum houses fascinating Aboriginal artefacts, wartime memorabilia and pioneer machinery.

HERITAGE VINES

Katnook is home to the rich terra rossa soil that started part of Coonawarra's storied wine history. Today, enjoy award-winning wine from the c.1867 vines in complimentary tasting flights at the cellar door. **See advertisement page 63**

SWIM EVERY DAY!

Adjacent a gorgeous swimming lake (with beach!), **Millicent Lakeside Caravan Park** offers a brilliant destination for families, couples and groups. Luxurious cabins sleep up to six! **See advertisement page 69**



South East Safari

Spend time connecting to the joy of nature! South East Safari is a locally owned and operated nature tourism business that offers guided tours with experienced ecologist, Abigail Goodman. Learn about the birds and wildlife, and hear the stories of Bool and Hacks Lagoons – an internationally recognised wetland. Access to quality binoculars and a wildlife spotting scope are provided. **PO Box 10, Avenue Range**
Mob: 0422 326 901
Email: info@southeastsafari.com.au
www.southeastsafari.com.au



Wild Game Wine

Cellar Door and Wine Bar

Wine tastings and sales by the glass or bottle, delicious local produce platters in a relaxed setting. Air-conditioned converted horse stable, oozing charm and heritage, full-length verandah with wood-fire, large grassed outdoor seating area. Mention this guide for a special offer.

91 Ormerod Street, Naracoorte
(adj Naracoorte Regional Art Gallery)
Mob: 0419 261 075
Email: mary@wildgamewine.com.au
www.wildgamewine.com.au



THE AVENUE INN ON FOURTH AVENUE



Stay, Eat and Play in Naracoorte at the Avenue Inn on Fourth Avenue.

This recently refreshed motel and licensed restaurant boasts a quiet location and clean, comfortable rooms, alongside great Melbourne-roasted coffee and multi award-winning Mod Oz fare. Soak up the sun on the large deck for an alfresco dining experience to remember. The onsite function room is ideal for private meetings and small gatherings.



P: (08) 8743 4374 • E: info@theavenueinn.net
www.theavenueinn.net • 17 Fourth Avenue, Naracoorte



Farmer's Leap – Fine Wine of Padthaway

Unique to Padthaway, our cellar door captures the essence of Farmer's Leap. A friendly warm environment with country hospitality. We offer meals and light fare, wine tastings, weddings, events and functions. Enjoy the sunshine and a glass of Destiny overlooking the vineyards or stay inside next to the fire, to savour a glass of the Brave Shiraz. Book your cellar door visit online at farmersleap.com/bookings
41 Hodgson Road, Padthaway
Ph: (08) 8765 5251
Email: cellardoor@farmersleap.com
www.farmersleap.com



Naracoorte Holiday Park

Explore natural wonders, historic tales of past and award-winning wineries while staying at Naracoorte Holiday Park. Located centrally to the tourist attractions of the region, you'll find plenty to do and wonder why you didn't make Naracoorte your destination sooner. Holiday makers, foodies, nature lovers, history buffs and business travellers alike enjoy Naracoorte Holiday Park.
81 Park Terrace, Naracoorte
Ph: (08) 8762 2128
Email: stay@naracoorteholidaypark.com.au
www.naracoorteholidaypark.com.au



The Sheep's Back Museum

Come and be surprised

Discover things you never knew about life on the land. A vivid experience of Australia's wool industry. All on the same site as the Naracoorte Visitor Information Centre.
• Hands-on children's museum • Automatic shearer
• Lindsay Baker model rail layout • Pre-biro schoolroom
• National award-winning museum • Information
• Craft • Souvenirs

36 MacDonnell Street, Naracoorte
Ph: (08) 8762 1399
www.thesheepsbackmuseum.org.au



OPEN 7 DAYS A WEEK
Monday-Saturday:
7am-9pm
Sunday: 8am-8pm
(08) 8760 2200



OPEN 7 DAYS A WEEK
Monday-Saturday:
9am-8pm
Sunday: 9am-6pm
(08) 8760 2203



Real Estate Naracoorte
Servicing SA and West Wimmera
Shop 5, Kinraig Plaza
(08) 8762 7900 | RLA62833
naracoorte.eldersrealestate.com.au



Banking for life
Monday-Friday:
9:30am-4pm
Shop 7/8, Kinraig Plaza
(08) 8762 5000



Galaxy Thai Takeaway
Shop 4A Kinraig Plaza
0434 095 242
E: galaxythai.co@gmail.com



Shop 6, Kinraig Plaza
(08) 8762 0247
E: eat@blacksmithscafe.com.au
blacksmithscafe.com.au



Newspapers, Magazines & Cards
Kiosk 1, Kinraig Plaza
0428 040 939
E: plazakiosk@hotmail.com



KINRAIG PLAZA
26-32 ROBERTSON STREET,
NARACOORTE
f kinraigplaza



Relax and explore Naracoorte and the Limestone Coast from the William MacIntosh Motor Lodge.

Boasting 30 comfortable rooms, all on the ground floor, in a tranquil garden setting with a spectacular golf course directly across the road.

Choose from queen, twin, family, deluxe or executive spa rooms.

Enjoy a meal at the onsite award-winning Highlander Restaurant, open 7 days a week for breakfast and dinner and offering a fully licensed fine dining experience, perfect for that special occasion.

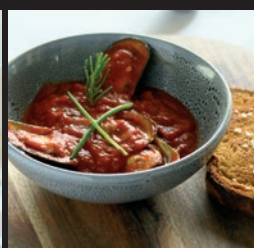
- Free Wi-Fi • Free onsite parking • Highlander Restaurant & Bar
- Room service • Wheelchair access

20 Stewart Terrace, Naracoorte P 08 8762 1644

E info@william-macintosh.com.au W william-macintosh.com.au

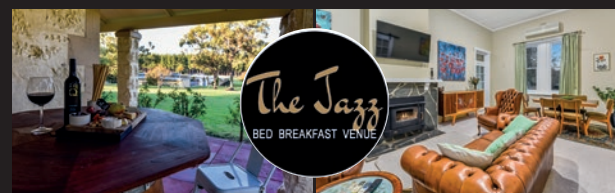


18 Stewart Terrace, Naracoorte P 08 8762 2599 W restmotels.com.au



DISCOVER SOMETHING UNEXPECTED

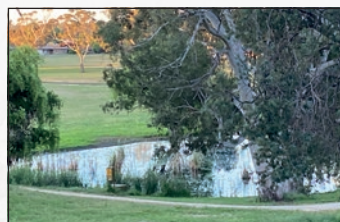
20 Stewart Terrace, Naracoorte P 08 8762 1644 W highlanderrestaurant.com.au



The Jazz B&B is a luxurious four bedroom stone villa set in beautiful surrounds. All rooms have flat screen TVs and free Wi-Fi. The outdoor area and pool room are perfect for entertaining family and friends.

2 Messamurray Road, Naracoorte

P 08 8762 1660 E info@thejazz.com.au W thejazz.com.au



PAORA B&B

This three bedroom home has incredible views over the Memorial Oval precinct, one of the most favoured precincts in Naracoorte.

Parklands, walking trails, a water feature, playground, multiple sporting fields and outdoor exercise facilities all on your doorstep.

- Free Wi-Fi • Barbecue facilities • Well equipped modern kitchen

P 0433 690 137 E panorama@naracoortecommodation.com.au



Welcome to Naracoorte

Welcome to the Naracoorte Hotel, your number one stop for eating, drinking and accommodation in the South East. We have got something for everyone with our Bistro serving the finest meals with local produce, our convenient bottle shop, sports bar, regular live music, function rooms and a range of accommodation options.



79 Ormerod Street, Naracoorte

p 08 8762 2400

e info@naracoortehotel.com.au

w naracoortehotel.com.au



AUSTRALIA'S FAVOURITE
WOOL BEDDING PRODUCTS
SINCE 1975



Improving your lifestyle... with wool

Come and see where MiniJumbuk make their world famous woollen bedding products.

Stand on the viewing platform, take a look into our factory and watch as our dedicated team handcraft each product to the highest standards from start to finish.

Visit the shop to find factory direct prices, along with giftware, quality sheepskin footwear and a wide range of R.M. Williams products.

61 Smith Street, Naracoorte, SA 5271 | info@minijumbuk.com.au | minijumbuk.com.au

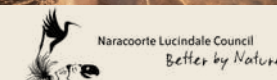
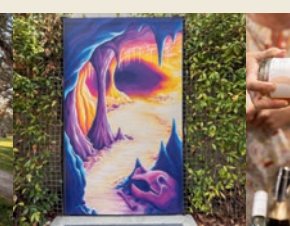
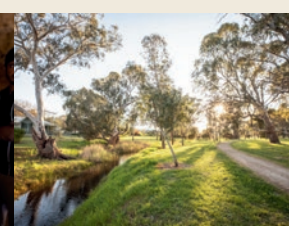
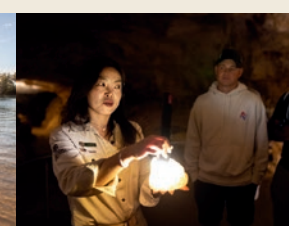
08 8762 3677 f i

OPEN
7 DAYS
Mon - Fri 8.30 - 5.30
Sat 9.00 - 4.00
Sun & Public Holidays
10.00 - 4.00

Naracoorte Lucindale

The heart of the Limestone Coast

Home to the World Heritage listed Naracoorte Caves, the Naracoorte Swimming Lake and Bool Lagoon, a Ramsar Wetland of International Significance. Plan your Limestone Coast experience with our specialist staff at the Visitor Information Centre and browse our range of gifts and local produce.



@naracoortelucindalecouncil
@visitnaracoorte



Naracoorte Visitor Information Centre

MacDonnell Street, Naracoorte

Ph: 08 8762 1399 Em: naracoortevic@nlc.sa.gov.au



Bellwether Wines, Coonawarra



COONAWARRA

Coonawarra is actually a tiny hamlet as well as the name of the one of the world's most celebrated wine regions. Coonawarra winemakers planted the first vines in the 1890s; today, the wine region stretches from Penola to Naracoorte, offering more than 20 cellar doors and an eating and drinking scene that is always evolving.

The parcel of rich, red terra rossa soil that helps make Coonawarra wines so distinct is small (it measures just 27 kilometres long and two kilometres wide) making it one of the most convenient regions to explore. Visitors especially love the five-kilometre **Coonawarra Wineries Walking Trail** for its breadth of cellar doors, the gorgeous surroundings and the fact no-one needs to drive!

The loop takes in **Redman Wines, Brand's Laira Coonawarra, Ottelia, Wynns Coonawarra Estate, DiGiorgio Family Wines** and **Zema Estate**. Download the mobile app before you start your stroll.



PENOLA

Penola is the largest town in the wine region and has many of its heritage stone buildings still intact. It's also famous as the home of

Australia's first saint, Saint Mary of the Cross MacKillop.

Mary MacKillop began her work in education here in the 1860s, while residing with her uncle, Alexander Cameron (known as 'the King of Penola'). Visit the **Mary MacKillop Penola Centre** to see the old schoolhouse where she taught after being inspired by Father Julian Tenison Woods to provide education for all children in the district.

Download the Walk with History app to tour other historic buildings in the town which was also home to poets John Shaw Neilson, Will Ogilvie and Adam Lindsay Gordon. **Petticoat Lane** features 1850s cottages including the home and herb garden of shoemaker Christopher Sharam and his wife Ellen, mother to their 15 children.

Visit local galleries, cafés and shops or, for a bit of exercise, walk, run or cycle the Coonawarra Rail Trail, which extends 19 kilometres through the wine region. The sealed trail begins in Penola and follows the unused Wolseley to Mount Gambier rail corridor. Soak up the history and beauty of the region and visit wineries along the way.

The **Greenrise Recreational Reserve**, just south of Penola, incorporates a site available for a two-night stay for fully self-contained RVs. Picturesque red gums surround a large 'dry lake' adjacent the **Greenrise Arboretum Trail**, with 6200 trees and more than 110 selections plus extensive pathways. This is an ideal spot to walk the dog, have a picnic or use the exercise equipment.

Coonawarra Place

LOCATED IN THE HEART OF AUSTRALIA'S PREMIUM RED WINE CENTRE, COONAWARRA, SOUTH AUSTRALIA



Conveniently situated near the starting point of the Coonawarra wine walking trail linking Zema Wines, DiGiorgio Family Wines, Wynns Coonawarra Estate, Brand's Laira and Redman Wines & Cellar Doors, allowing you to taste the wines without the hassle of driving. Formally known as Coonawarra Units, we offer a range of comfortable, spacious and well-equipped accommodations, laid out in Cottage Row style around beautiful lawns and gardens.



FREE WI-FI • FREE BARBECUE • COMPLIMENTARY SELF-SERVE BREAKFAST SUPPLIES

15014 Riddoch Highway, Coonawarra • P: 0476 646 406 • www.coonawarraplace.com.au

MY COONAWARRA WineTours

CUSTOMISED HALF AND FULL DAY TOURS

Let **My Coonawarra Wine Tours** take you on a unique and unforgettable experience discovering the best that the Limestone Coast has to offer.

Relax and enjoy a great day out with wine, food and friends!

Uncork the Magic of Coonawarra

FOR BOOKINGS

Phone: 0481 831 446 or 0481 835 126

Email: info@mycoonawarrawinetours.com.au

www.mycoonawarrawinetours.com.au



Visit Coonawarra's Hidden Gem

M-F 9am - 4.30pm, Weekends & Public Holidays 11am - 4pm
Wine tasting and light lunches available
08 8736 3260 | blcellardoor@brandslaira.com

Alexander Cameron Suites

- Town centre location • AAAT ★★★★★
- 18 luxury rooms, spa rooms available
- Three-bedroom cottage, sleeps six people
- Free wireless broadband internet access available
- Kitchenette facilities in all suites
- Complimentary in room continental breakfast

23-25 Church Street, Penola
Ph: (08) 8737 2200 Freecall: 1800 217 011
Email: info@alexandercamersuites.com.au
www.alexandercamersuites.com.au

Balnaves of Coonawarra

Family owned and operated, Balnaves' unique Wine Room overlooks a tranquil pond, surrounded by vineyards, bird life and over 900 beautiful roses. Relax on the deck, laze on the lawn, or sit amongst the rose garden with a glass of wine and a picnic cheese box. Kids' snack boxes are also available.
Monday to Friday: 9am-4:30pm
Weekends and Public Holidays: 11:30am-4:30pm

15517 Riddoch Highway, Coonawarra
Ph: (08) 8737 2946
Email: cellar@balnaves.com.au
www.balnaves.com.au

Katnook COONAWARRA

A visit to Katnook Estate will give you more than a tasting of award-winning wines, it's also a journey through a century of winemaking history as one of the oldest wineries in the Coonawarra. Visitors can see John Riddoch's original buildings, which today are home to Katnook's Cellar Door. Enjoy a personalised tasting of Katnook wines and sample a delicious selection of cheese and local produce.

+61 (0)8 8737 0300 cellardoor@katnookestate.com.au www.katnookestate.com.au
Katnook Cellar Door, Riddoch Highway, Coonawarra SA 5263 Opening Hours: Mon-Fri 10am-5pm, Sat-Sun 12pm-5pm

WINE FLIGHTS
REGIONAL PRODUCE
- OPEN 7 DAYS -

LECONFIELD COONAWARRA

15454 RIDDOCH HWY
COONAWARRA
- P: 08 8737 2326 -

Di Giorgio Family COONAWARRA

WINE TASTING | PLATTERS | EXPERIENCES

WWW.DIGIORGIO.COM.AU
Enjoy our beautiful lawn overlooking the vineyards, kids and dogs welcome.
Grab a glass of wine, put together a platter and relax for a while.
Open every day 10am-5pm

PATRICK OF COONAWARRA

ESTATE GROWN, FAMILY OWNED.

PRODUCE PLATTERS & CHOCOLATE PAIRINGS.

Experience Patrick of Coonawarra's idyllic grounds with a delicious produce platter or a mouth watering chocolate & wine pairing.

15598 Riddoch Highway, Coonawarra SA 5263 | www.patrickofcoonawarra.com | T 08 8737 3687 | E cellardoor@patrickofcoonawarra.com



Mary MacKillop Penola Centre

The inspirational place where it all began

Step into history and immerse yourself in the remarkable beginnings of Australia's First Saint, Mary of the Cross MacKillop. Delve into her inspiring journey and explore:

- The authentic 1867 schoolhouse where Mary once taught.
- The rich early history of Penola.
- Insights into the life of Fr Julian Tenison Woods.

Corner of Petticoat Lane and Portland Street, Penola
Ph: (08) 8737 2092
Email: admin@mackilloppenola.org.au
www.mackilloppenola.org.au



Don't miss our gift shop, offering a variety of mementos, cards, and books to commemorate your experience.

Open every day from 10am to 4pm
 (closed on Christmas Day and Good Friday)



Majella Wines

Premium, award-winning Coonawarra wine, crafted by a family owned estate

Situated on the famed Coonawarra 'terra rossa' soil, our family-owned winery boasts a range of vegan-friendly wines that are a fine example of what makes Coonawarra a premium wine destination in Australia. Come and visit to experience the finest wines in Coonawarra.

2131 V&A Lane, Coonawarra
Ph: (08) 8736 3055
Email: admin@majellawines.com.au
www.majellawines.com.au



Raidis Estate

Raidis Estate believe everything in life is better when shared, so tastings at their place are seated around large tables so friends can enjoy wine together.

The cellar door is family friendly with plenty of games and safe space to run around for the kids, so the adults can relax!



15741 Riddoch Highway, Penola
Mob: 0488 165 170
www.raidis.com.au



Bowen Estate

classic coonawarra

Est 1972

Cellar door open seven days.

Monday–Friday 10am to 5pm

Weekends and public holidays 10am to 4pm

Closed Christmas Day, Boxing Day, Good Friday and New Year's Day.

15459 Riddoch Highway, Coonawarra
www.bowenestate.com.au



Rymill Coonawarra

Described as a 'must visit' by regarded wine critic James Halliday, our stunning winery and cellar door sits amongst our vineyards and picturesque grounds with unique views of winemaking and viticulture.

- Multi-level observation decks
- Wine tastings and sales
- Daily platters
- Open every day 10am–5pm

110 Clayfield Road, Glenroy
Ph: (08) 8736 5001
Email: sales@rymill.com.au
www.rymill.com.au



TRUE COONAWARRA

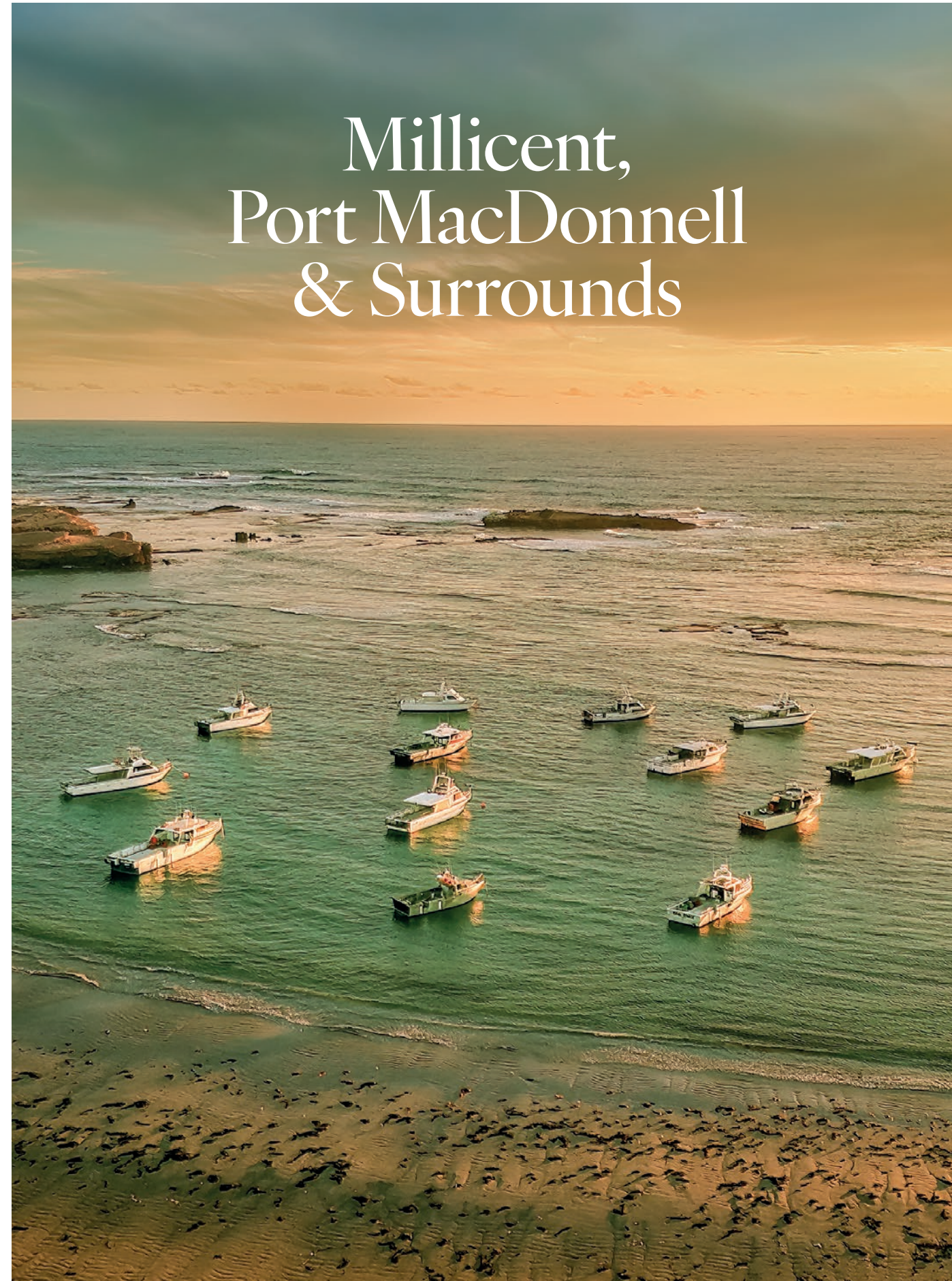
Zema Estate is a family winery, with over 40 years of passion, tradition and quality winemaking. Join us for a wine tasting, sample our gourmet platters, or book a private Tasting Experience where you can try our museum wines.

Cellar Door Open 7 Days
zema.com.au

ZEMA
 E S T A T E



Millicent, Port MacDonnell & Surrounds



Carpenter Rocks



SOUTHEND

The small coastal township of Southend was the first seaport in the Limestone Coast. Named Grey Town (after Governor Grey) in 1846, and Rivoli Bay South from 1875 to 1879, it was changed back to Grey Town until 1971 when it was officially named Southend.

Today, the town is a working cray fishing port and a holiday village. The ocean remains the focus of life, with plenty of safe swimming beaches, good surf, walking trails, boardwalks, lookouts and popular 4WDing spots.

Located 27 kilometres north of Millicent and 20 kilometres south of Beachport on the Southern Ports Highway, it's the gateway to the **Canunda National Park** which covers approximately 9300 hectares from Southend to Carpenter Rocks.

The Canunda National Park offers well-signed 4WD tracks where you can enjoy scenic views, discover Aboriginal shell middens and try your hand at beach fishing. (Please note, vehicles must stay on the designated track.)

The nearby township of Mount Burr has the newly developed Mount Burr Trails, offering picturesque views and opportunities to immerse yourself in nature.



MILLICENT

One of South Australia's most significant rural centres, Millicent is steeped in rich Aboriginal and pioneering history, surrounded by fertile farmlands, timber and seafood industries.

It's the perfect spot to base yourself to explore a number of major natural and historical attractions; it also offers a range of accommodation, shopping, café and dining experiences, including the legendary **Mayura Station**.

Millicent has an impressive range of historic buildings, among them the 1873 primary school building which now houses the award-winning **Millicent Museum**. The museum has a 'Shipwreck Room', a display on the extended drainage system of the South-East, the Helen Hughes vintage clothing assortment and one of Australia's

best collections of horse-drawn vehicles. Millicent is also home to murals, sculptures and continually evolving public art installations incorporated into a walk around the township.

The town prides itself on a number of free, family-friendly attractions. The largest is the Millicent **Domain Skatepark and Nature Play Space**, rightly called the 'Mega Playground' owing to its impressive range of play spaces, swings and slides. **The Millicent Swimming Lake** (open November to March) and the **Road Safety School** are also popular with families.

Wide open spaces surround the township with a reclaimed quarry at **Lake McIntyre** bursting with bird life and native vegetation (it also has barbecue facilities). Take a stroll through the stunning Coola Outstation trail in the **Canunda National Park**, or journey on a 4WD adventure with **Stillwater 4x4 Scenic Tours**.

Venture south to **Tantanoola** via the Windfarm Tourist drive, taking in views of **Lake Bonney**, the largest freshwater Lake in South Australia on the edge of Canunda National Park. The **Tantanoola Cave** is recognised as one of the finest single-chamber caves in the region. Don't miss the historic **Glencoe Woolshed** and stunning scenery of **Lake Leake** and **Lake Edward**.



PORT MACDONNELL AND CARPENTER ROCKS

Port MacDonnell once operated as Mount Gambier's seaport and is home to a fleet fishing the clean waters of the Southern Ocean.

A long history of seafaring can be discovered at the **Port MacDonnell Maritime Museum** located in the Community Complex along with the **Community Gallery**.

The town plays host to some distinctive attractions, including South Australia's southernmost point and the remnants of a petrified forest. There's also **Feast's collection of classic cars** and memorabilia not far out of town – a collection that reliably excites those who stumble upon it!

Carpenter Rocks, near the popular fishing and camping sites at Cape Banks Lighthouse, is the southern entrance to the **Canunda National Park** that runs north to Southend and Beachport. Surfers will want to seek out the waves at **Cape Northumberland**, where you can still see the foundations of the first lighthouse built on mainland South Australia.

Port MacDonnell is close to many of the region's famous sinkholes. **Little Blue Lake** is a popular swimming spot, and **Kilsby Sinkhole**, perhaps the most renowned, is an attraction located on private property (booking essential); it's a must for divers who rate the 65-metre-deep sinkhole among the best in the world owing to the water clarity. You can also snorkel Kilsby with a guide, a chance to get some proper context on the geological phenomena. There's snorkelling and diving on offer at **Ewens Ponds** which boasts a freshwater spring system. Wetsuit and equipment hire is available nearby from Allendale East General Store and Dive Shop.

Be sure to make time to climb nearby **Mount Schank**, a dormant maar volcano: a walking trail leads to the rim (100 metres above sea level) for dramatic views of the surrounding landscape and into the crater itself. It's a good place for a picnic. More walking trails can be found at **Dingley Dell Conservation Park**, **Germein Reserve** and further afield at **Telford Scrub**.

When it comes to a feed of fresh fish, head out to sea on a fishing charter – or visit the local cafés, pubs and restaurants. **The Victoria Hotel** has the Shipwreck Bistro (great for families); check out also the **Tide Espresso Bar**, **Bay Pizzeria** and **Salt Café & Bar** (or the popular fish and chip shops overlooking the foreshore). Stop by the **Rocks Tavern** at Carpenter Rocks and **The Rocks Shop** where the pies are house-made!

For a historic stay, check out the **Customs House**, which sits overlooking the foreshore.

NELSON, PORTLAND & NARRAWONG

Just over the Victorian border, you'll find Nelson, a tiny township located on the **Glenelg River**, where you can enjoy boating, river and ocean fishing, swimming, snorkelling, bird watching, water skiing and canoeing.

Continue on the Great Ocean Road to **Portland** with its beautifully maintained heritage buildings, **Botanic Gardens** and **Marine Discovery Centre**. Watch the local fishing fleet unload its catch, walk the foreshore, spot the resident seals and perhaps spy a southern right whale from the breakwater.

With Portland as your base, you can daytrip to magnificent **Cape Bridgewater** with its natural blowholes and petrified forest, explore the **Great South West Walk** or head to **Narrawong** for camping, fishing and boating.



Southend

EVERYTHING IN ONE PLACE

Set on eight acres of tranquil parkland overlooking countryside, **Limestone Coast Tourist Park** is your perfect base from which to explore Mount Gambier, beaches, wineries and sinkholes.

See advertisement page 35

ALL BASES COVERED

Pine Country Caravan Park near the Blue Lake/Warwar offers cabins, ensuite powered sites and glamping bell tents – think queen size beds, coffee machines and a roaring campfire!

See advertisement page 31



Somerset Hotel Motel

Our motel rooms offer comfortable, budget friendly accommodation in the heart of Millicent.

All rooms have ensuite bathrooms, digital televisions, free Wi-Fi, heating/cooling and onsite parking.

Our à la carte menu is available for lunch and dinner seven days a week (except Good Friday and Christmas Day). With all your pub favourites plus our Chef's signature dishes, the Somerset

offers country pub dining at its best. Our wine list proudly boasts an extensive selection of wines from across the Limestone Coast.

Enjoy a cocktail in our recently renovated Lane bar or drop into the Bottom Bar for a cold beer with our friendly locals.

Visit our Sip'n Save drive through Bottleshop for all your favourite beers, spirits, wines and RTDs.

2-4 George Street, Millicent
Ph: (08) 8733 2888
Email: somerset.hotel@internode.on.net
www.somerset-hotel-motel.com.au





Kemps Machinery Service

- Trusted Automotive Mechanical Repairer for all makes and models • Family-owned local business since 1974
- RAA of SA – 24 hr roadside contractor • RAA Battery stockist • Caravan, Trailer brake repairs
- Sales and service – Lawn and garden equipment
- Parking and close to CBD
- Husqvarna, Rover, MTD, Cox, Engel dealer



12 Stuckey Street, Millicent
Ph: (08) 8733 2171

Email: sales@kempsmach.com.au
www.kempsmachineryservice.bapnet.com.au



McCourts Garden Centre, Florist and Café

Situated in a 139-year-old church and cottage, we supply Millicent and the Limestone Coast with excellent quality plants, gifts, coffee, food and flowers seven days a week.

Garden Centre open 9am–5pm. Café open 9am–3pm.

Winner of the NGISA Best Regional Garden Centre of SA for 2024.

48 Davenport Street, Millicent
Garden Centre: (08) 8733 4566

Café: (08) 8714 6830
Email: chris@mccourtsgarden.com.au

www.mccourtsgarden.com.au



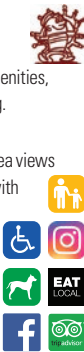
Port MacDonnell Foreshore Tourist Park

Set on Woolwash Beach, with well kept, clean amenities, we strive to make your stay enjoyable and relaxing.

- 120 sheltered, grassed, powered site
- Two self-contained two-bedroom cabins with sea views
- Two self-contained two-bedroom lodges (one with no ensuite) • One pet-friendly cabin (no ensuite)
- Courtyard with camp kitchen and barbecue.

12 Eight Mile Creek Road, Port MacDonnell
Ph: (08) 8738 2095

Email: enquiries@woolwash.com.au
www.woolwash.com.au



Award-winning food and friendly service

Providing a comfortable country environment to meet with your family and friends.

Great selection of freshly baked products including:
Pastries | Donuts | Cakes

All pastries are trans-fat free and made from vegetable fats.

Sandwiches and rolls made fresh every day from our **award-winning** bread rolls. Made to order birthday cakes and family pies. Great selection of hot and cold drinks available. Proudly supporting local producers and sporting clubs.

Come in where the food is great!

Shop 4/6 Davenport Street, Millicent
P (08) 8733 4303 E andysbakery19@gmail.com



Southend Tourist Park

New management offers grassed sites at two beachside locations. • The powered Caravan Park hosts a new camp kitchen and full amenities. • The off-the-grid Bush Camp is nestled amongst native bushland, offering flushing toilets. Explore and relax in beautiful Southend!



Office: 2 Eyre Street, Southend
Mob: 0482 965 967

Email: southendtouristpark@gmail.com
www.southendtouristpark.com



Victoria Hotel

Family-owned and operated

- Open seven days a week
- Meals – Pokies – TAB – Lotto
- Drive through bottleshop
- Accommodation



40 Meylin Street, Port MacDonnell
Ph: (08) 8738 2213
Email: vichoteltptmac@bigpond.com
www.ptmacpub.com.au



Visitor Information Outlet in Port MacDonnell Community Complex

- Friendly staff • Tourist Information • Art Gallery
- Maritime Museum • One Card Library
- Free Wi-Fi and public computers • Banking Facilities
- Boat Ramp permits • Souvenirs and more...

Open: Monday to Friday 9am–5pm, weekends and some public holidays 11am–3pm.

5–7 Charles Street, Port MacDonnell
Ph: (08) 8738 3000
Email: pmcc@dcgrant.sa.gov.au
www.dcgrant.sa.gov.au/discover



MILLICENT LAKESIDE CARAVAN PARK & TAKEAWAY

Millicent Lakeside Caravan Park is a friendly, family-owned caravan park in Millicent.

Located between Adelaide and Melbourne in the Limestone Coast region of South Australia, it is the perfect base for individuals, groups and families wishing to visit the fabulous nearby attractions.

About Our Park

Free complimentary Wi-Fi • Group bookings
Seventh night free • Coin operated laundry
Deluxe and ensuite cabins with reverse-cycle air-conditioning • Shady and lawned powered and unpowered sites • Pet friendly on sites • Rainwater tank • Adjacent to man-made swimming lake

Visit & Explore

Visit this part of the scenic Princes Highway to explore:
• Millicent Living History Museum
• Swimming Lake • Canunda National Park and 4x4 trails • Lake McIntyre
• Tantanoola Caves and much more!

The heart of the Limestone Coast

Mt Gambier, Penola, Robe and Beachport are also conveniently nearby for a bumper-packed holiday of sightseeing and adventure.

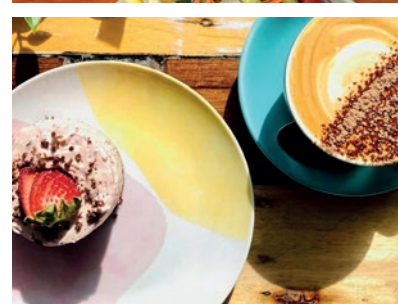
12 Park Terrace, Millicent | Ph: Derek & Jo (08) 8733 1188
millicent.lakeside@bigpond.com | www.millicentlakesidecarapark.com.au

Catering and function options available

OPEN 7 DAYS

63 Sea Parade Port MacDonnell
P 08 8738 2943
E admin@saltcafeandbar.com.au

CHECK OUR SOCIALS FOR EVENTS AND SPECIALS



Servicing the Limestone Coast region of the beautiful South East

84-86 George Street, Millicent
Shop 1, 4 Railway Terrace, Beachport

Office: 08 8733 3990
Deon: 0419 037 896
Fiona: 0407 976 908
Tabatha: 0402 822 504
Melissa: 0427 558 620

office@southeastpropertysales.com.au
www.southeastpropertysales.com.au



G'DAY PARKS

Millicent Hillview Caravan Park

Enjoy a magical sunrise view or relax around the campfire

- Holiday and Park ensuite cabins – one, two and three rooms
- Powered and unpowered sites – with country views, sheltered, shaded, grassed, drive-through and bushland style
- Two camp kitchens – wood-fired pizza oven – gas barbecue
- Playground, sandpit, trampoline and basketball
- Seniors disc – pets on sites welcome
- Free unlimited NBN Wi-Fi

Dalton Street, Millicent
Ph: (08) 8733 2806
Email: stay@hillviewcaravanpark.com.au
www.hillviewcaravanpark.com.au

★★★★★
 BOOK ONLINE
 Wi-Fi

The Grand Hotel Millicent

Classic Aussie Pub

- Centrally located • Traditional upstairs hotel accommodation • Choice of single, twin, queen and family rooms • Free Wi-Fi • Dining and bar open for lunch and dinner seven days • Upgraded gaming room (gamble responsibly) • Wide range of beers, wines and spirits available from our bottle shop seven days

55 George Street, Millicent
Ph: (08) 8733 2242
Email: thegrandhotel55@gmail.com
www.grandhotelmillicent.com

Grand Hotel
 BOOK ONLINE
 Wi-Fi

LIMESTONE COAST

Scan the QR code to read online

All information contained in this publication is correct at the time of printing (in March 2024). All advertisements are accepted on the basis that their contents are true and accurate and that they are in no way misleading or otherwise contrary to the Trade Practices Act 1974, or the Fair Trade Act (SA). HWR Media do not accept any liability to any person claiming they have been misled or deceived by any material produced herein. Copyright HWR Media 2024.

Images © South Australian Tourism Commission (page 1, 6, 8, 10, 14, 15, 19, 38, 39), @jrodcaptures (page 5), Adam Bruzzone (page 14, 15), Adam Stern (cover), Adele Barnes (page 52–53), Andy Nowell (page 29), Becchara Palmer (page 24), Czech Aus Out (page 7, 26–27, 28, 29), Dani Bell (page 67), Georgia Schipp (page 22), James Dawson (page 71), Julie Trenaman (page 47), Kaster Podiotan (page 7, 42–43), KaZKaptureZ (page 56), Mills Media Productions (page 11, 20), Ockert Le Roux (page 3–4), Offroad Images (page 13), Phil Ackland (page 6, 65), Sarah Cunningham Photography (page 44), Thomas Cowey (page 6, 46), Tim Rosenthal (page 25), Tom Huntley (page 16), Tourism Australia (page 4–5, 7, 12, 19, 54–55, 60–61), TUWY Media (page 5, 29).

Published by:
 HWR Media
 Phone: (08) 8379 9522
 Email: hwr@hwrmedia.com.au
 hwrmedia.com.au

the LIMESTONE COAST

HWR MEDIA

SOUTH AUSTRALIA



The Obelisk, Robe

Hospitals

Bordertown Memorial Hospital
 23 South Terrace, Bordertown
 Phone: (08) 8752 9000

Keith & District Hospital
 35 Hill Avenue, Keith
 Phone: (08) 8755 1555

Kingston Soldiers Memorial Hospital
 Corner Cooke and Young streets, Kingston SE
 Phone: (08) 8767 0222

Millicent and District Hospital and Health Service
 51 Mount Gambier Road, Millicent
 Phone: (08) 8733 0100

Mount Gambier and Districts Health Service
 276 Wehl Street North, Mount Gambier
 Phone: (08) 8721 1200

Naracoorte Health Service
 101 Jenkins Terrace, Naracoorte
 Phone: (08) 8762 8100

Penola War Memorial Hospital
 18 Church Street, Penola
 Phone: (08) 8737 2311

Fire danger

During Fire Danger Season, generally from November to April, there are strict conditions for lighting any fires, including campfires. On Total Fire Ban days, all fires are banned. Avoid severe penalties by checking **cfs.sa.gov.au** before lighting any fires.

Visit **cfs.sa.gov.au** and subscribe to bushfire warnings and other important information and check the CFS Facebook page to stay informed. Monitor the daily

weather forecast and Fire Danger Ratings, know your Bushfire Safer Place, and listen for warning messages and updates on your local AM radio station. Further bushfire safety information is available by contacting the Bushfire Information Hotline on 1800 362 361.

Enjoy South Australia's regions – but don't bring a pest with you

We take zero chances when it comes to fruit fly. To protect our produce, fines apply for bringing restricted fruit and fruiting vegetables across the border.

If you're planning a trip to the Riverland, buy local and support our growers. Do not bring any fresh fruit or fruiting vegetables into the region unless you have an itemised receipt from a South Australian retail outlet showing it was purchased from outside a current fruit fly outbreak or suspension area.

To find out more, visit **pir.sa.gov.au/fruitfly**

Keep our vines and wines safe

South Australia has some of the oldest winegrape vines in the world. Your shoes and clothing can pick up and spread pests and diseases, including phylloxera. Please don't walk amongst our vines. Help protect the vines that make our special wines. For more information about vineyard biosecurity, visit **vinehealth.com.au**

Emergency broadcasting

ABC broadcasts official warnings from emergency agencies at regular intervals on ABC Radio, ABC News 24 and via Twitter @abcemergency. For local ABC Radio frequencies, phone 13 99 94 or go to

abc.net.au/emergency. ABC Adelaide is broadcast on 891AM, digital radio **abc.net.au/radio** and is also available via the ABC Radio Mobile app.

Drones

It is an offence to fly drones (remotely piloted aircraft) in South Australia's national parks, conservation parks, game reserves, recreation parks or regional reserves and marine park restricted access zones without a permit. For more visit **parks.sa.gov.au/permits-and-licences/drones-and-aircraft**

Responsible 4WD exploring

As word gets out about the fantastic National Parks and coastline on offer in the Limestone Coast, more and more people are visiting the region each year to drive the tracks and explore these areas for themselves.

While new visitors are welcome, irresponsible driving habits are endangering the fragile coast. The coastal landscape, although it looks rugged and harsh, can be easily damaged by 4WDs and motorbikes driving off the tracks.

There are some simple principles we ask you to follow:

- Remain on established tracks
- Don't disturb the plants and animals
- Respect the heritage and the history
- Look out for others
- Take your rubbish home

Also please note, speed limits on South Australian beaches have been reduced to increase safety for all beachgoers. From December 1 2023, the default speed limit on beaches will be 40km/h and 25km/h within 50 metres of a pedestrian, unless otherwise signposted.

Advertiser index

ACCOMMODATION

| | | |
|--|---------------------------------------|----|
| Beachport | | |
| Beachport Caravan Park..... | (08) 8735 8128 | 53 |
| Bompas 1878 Café & Accommodation..... | bompas.com.au | 52 |
| Bonnies of Beachport | 0408 482 899 | 52 |
| Southern Ocean Tourist Park | southernoceantouristpark.com.au | 53 |
| Bordertown | | |
| 105 On The Park Motel..... | (08) 8752 0922 | 44 |
| Bordertown Caravan Park..... | (08) 8752 1752 | 45 |
| Cape Jaffa | | |
| Cape Jaffa Holiday Park | capejaffaholidaypark.com.au | 41 |
| Coonawarra | | |
| Coonawarra Place..... | coonawarraplace.com.au | 60 |
| Keith | | |
| Keith Hotel Motel..... | keithhotel.com.au | 45 |
| Kingston SE | | |
| Kingston Foreshore Caravan Park..... | (08) 8767 2050 | 38 |
| Kingston RV Park..... | (08) 8767 2033 | 38 |
| Lobster Motel..... | (08) 8767 2322 | 41 |
| Our Destination is 9..... | ourdestinationis9.com.au | 40 |
| Sandy Grove Dog Boarding Kennels | 0457 738 809 | 41 |
| Millicent | | |
| Millicent Hillview Caravan Park | hillviewcaravanpark.com.au | 70 |
| Millicent Lakeside Caravan Park & Takeaway | (08) 8733 1188 | 69 |
| Mount Gambier | | |
| Apartments on Tolmie..... | 0419 140 188 | 34 |
| Blue Lake Holiday Park..... | (08) 8725 9856 | 31 |
| Comfort Inn The Lakes..... | thelakesmountgambier.com.au | 31 |
| Delgattie Estate | (08) 8724 6460 | 33 |
| Limestone Coast Tourist Park | limestonecoasttouristpark.com | 35 |
| Motel Mount Gambier | (08) 8725 5800 | 34 |
| Mount Gambier Central Caravan Park | mountgambiercentralcaravanpark.com.au | 35 |
| Pine Country Caravan Park | pinecountry.com.au | 31 |
| The Barn | barn.com.au | 35 |
| The Commodore..... | (08) 8724 6400 | 33 |
| The Henty..... | (08) 7725 4100 | 33 |
| The Mount Gambier Hotel | mountgambierhotel.com.au | 32 |
| The Park Hotel..... | parkhotel.net.au | 32 |
| Naracoorte | | |
| Naracoorte Holiday Park | (08) 8762 2128 | 56 |
| Panorama B&B..... | 0433 690 137 | 58 |
| Rest Motels | (08) 8762 2599 | 58 |
| The Avenue Inn..... | (08) 8743 4374 | 57 |
| The Jazz B&B | (08) 8762 1660 | 58 |
| William MacIntosh Motor Lodge | (08) 8762 1644 | 58 |
| Padthaway | | |
| Padthaway Caravan Park..... | padthawaycaravanpark.com.au | 55 |
| Penola | | |
| Alexander Cameron Suites..... | (08) 8737 2200 | 62 |
| Port MacDonnell | | |
| Port MacDonnell Foreshore Tourist Park..... | (08) 8738 2095 | 68 |
| Robe | | |
| Harbour View Motel | robeharbourview.com.au | 48 |
| Lakeside Tourist Park..... | lakesiderobe.com.au | 50 |
| Robe Holiday Park..... | robeholidaypark.com.au | 49 |
| Robe Nampara Cottages..... | robenamparacottages.com.au | 51 |
| Sea Vu Caravan Park..... | seavucaravanpark.com.au | 51 |
| The Guichen..... | guichenbaymotel.com.au | 51 |
| Southend | | |
| Southend Tourist Park | southendtouristpark.com | 68 |

ATTRACTIONS AND EXPERIENCES

| | | |
|---|-------------------------------------|-----|
| National Parks and Wildlife | parks.sa.gov.au | IFC |
| Bool Lagoon | | |
| South East Safari | southeastsafari.com.au | 57 |
| Bordertown | | |
| Clayton Farm Heritage Museum | 0417 890 868 | 45 |
| Walkway Gallery..... | (08) 8752 1044 | 45 |
| Kingston SE | | |
| Kev's Kollektion | 0408 398 061 | 39 |
| Millicent | | |
| McCourts Garden Centre, Florist & Café..... | (08) 8733 4566 | 68 |
| Mount Benson | | |
| Humpalicious Camel Farm..... | humpalicious.com.au | 50 |
| Mount Gambier | | |
| Echo Farm..... | 0481 574 663 | 35 |
| Flipout..... | (08) 8723 2045 | 30 |
| Kaboom Collectables..... | (08) 8723 2045 | 30 |
| Kaboom Family Entertainment..... | (08) 8723 2045 | 30 |
| Naracoorte | | |
| MiniJumbuk..... | (08) 8762 3677 | 59 |
| The Sheep's Back Museum..... | (08) 8762 1399 | 56 |
| Penola | | |
| Mary MacKillop Penola Centre..... | mackilloppenola.org.au | 64 |
| FOOD, WINE AND BEVERAGES | | |
| Beachport | | |
| Beachport Brewing Co..... | beachportbrewingco.com.au | 51 |
| Bompas 1878 Café & Accommodation..... | (08) 8784 0804 | 52 |
| The Lobster Pot | facebook.com/thelobsterpotbeachport | 53 |
| Bordertown | | |
| Bordertown Hotel..... | (08) 8752 1016 | 44 |
| Coonawarra | | |
| Balnaves of Coonawarra | (08) 8737 2946 | 62 |
| Bowen Estate | bowenestate.com.au | 64 |
| Brand's Laira of Coonawarra..... | brandslaira.com | 62 |
| Coonawarra Winery Map..... | coonawarra.org | 18 |
| Di Giorgio Family Wines..... | digiorgio.com.au | 62 |
| Katnook Estate | katnookestate.com.au | 63 |
| Leconfield Coonawarra | leconfieldcoonawarra.com | 63 |
| Majella Wines..... | majellawines.com.au | 64 |
| Patrick of Coonawarra | (08) 8737 3687 | 63 |
| Rymill Coonawarra..... | (08) 8736 5001 | 64 |
| Zema Estate..... | zema.com.au | 64 |
| Keith | | |
| Henry & Rose Café | (08) 8755 1061 | 44 |
| Keith Hotel Motel..... | keithhotel.com.au | 45 |
| Kingston SE | | |
| Beach Noms..... | beachnoms.au | 40 |
| Bliss By the Sea | blissbythesea.au | 40 |
| Crown Inn Kingston..... | crowninnkingston.com.au | 40 |
| Royal Mail Hotel..... | (08) 8767 2002 | 41 |
| The Candy Store & Café..... | (08) 8767 2063 | 41 |
| Millicent | | |
| Andys Bakery, Coffee & Cake..... | (08) 8733 4303 | 69 |
| Grand Hotel..... | (08) 8733 2242 | 70 |
| Somerset Hotel Motel | (08) 8733 2888 | 67 |
| Mount Benson | | |
| Mount Benson Estate..... | 0417 996 796 | 48 |
| Mount Gambier | | |
| Little Ripper Brewing Co..... | littlerippabrewingco.com.au | OBC |
| Scroll Queen | 0478 818 904 | 34 |
| The Commodore..... | (08) 8724 6400 | 33 |
| The Henty..... | (08) 7725 4100 | 33 |
| The Mount Gambier Hotel | mountgambierhotel.com.au | 32 |
| The Park Hotel..... | parkhotel.net.au | 32 |
| The South Eastern..... | southeasternhotel.com.au | 32 |

| | | |
|--|----------------------------|--------|
| Naracoorte | | |
| Highlander Restaurant..... | (08) 8762 1644 | 58 |
| Naracoorte Hotel Motel | naracoortehotel.com.au | 59 |
| Wild Game Wine Cellar Door & Wine Bar | wildgamewine.com.au | 57 |
| Padthaway | | |
| Farmer's Leap Wines..... | (08) 8765 5251 | 56 |
| Penola | | |
| Raidis Estate | raidis.com.au | 64 |
| Port MacDonnell | | |
| Salt Café & Bar..... | saltcafeandbar.com.au | 68 |
| Victoria Hotel – Shipwreck Bistro..... | (08) 8738 2213 | 68 |
| Robe | | |
| Caledonian Inn..... | caledonianinnrobe.com.au | 48 |
| Drift Robe | driftrobe.com.au | 49 |
| Olive's Pizza Bar | olivesrobe.com.au | 49 |
| Robe Hotel | robehotel.com.au | 49 |
| Robetown Brewery..... | robetownbrewery.com.au | 50 |
| GENERAL SERVICES | | |
| Beachport | | |
| Coastal Treasures..... | (08) 8735 8010 | 53 |
| Bordertown | | |
| Tatiara Civic Centre..... | (08) 8752 1044 | 45 |
| Kingston SE | | |
| Amali Gifts | amaligifts.com.au | 40 |
| Dewberry Home | (08) 8767 2355 | 40 |
| Megz Hair Timez..... | (08) 8767 2694 | 41 |
| Millicent | | |
| Kemps Machiney Service | (08) 8733 2171 | 68 |
| South East Property Sales & Management..... | (08) 8733 3990 | 69 |
| Mount Gambier | | |
| Mt Gambier Laundry..... | mtgambierlaundry.com.au | 34 |
| Naracoorte | | |
| Kincraig Plaza | facebook.com/kincraigplaza | 57 |
| INFORMATION AND BOOKINGS | | |
| Glenelg Visitor Information Centres...visit.glenelg.vic.gov.au | | 70 |
| Visitor Information Centres | southaustralia.com | IBC |
| Kingston SE | | |
| Discover Kingston SE | discoverkingstonse.au | 40, 41 |
| Kingston Visitor Information Centre..... | (08) 8767 2036 | 38 |
| Meningie | | |
| Meningie Information Hub..... | 1300 785 277 | 39 |
| Mount Gambier | | |
| Mount Gambier Visitor Centre | 1800 087 187 | 29 |
| Naracoorte | | |
| Naracoorte Visitor Information Centre..... | (08) 8762 1399 | 59 |
| Port MacDonnell | | |
| Visitor Information Outlet in Port McDonnell | | 40 |
| Community Complex..... | (08) 8738 3000 | 68 |
| Robe | | |
| Robe Tourism Association | robe.com.au | 50 |
| Robe Visitor Information Centre | robe.sa.gov.au/explore | 50 |
| TOURS AND TRANSPORT | | |
| Coonawarra | | |
| My Coonawarra Wine Tours..... | 0481 835 126 | 61 |

KILSBY SINKHOLE
LIMESTONE COAST

Travel. Our Way.



ADELAIDE & SUBURBS

| | |
|---------------|--------------|
| Adelaide | 08 8203 7611 |
| Port Adelaide | 08 8405 6560 |

BAROSSA

| | |
|-------------------|--------------|
| Barossa – Tanunda | 08 8563 8334 |
| Gawler | 08 8522 9260 |
| Kapunda | 08 8566 2902 |

CLARE VALLEY

| | |
|------------------------|--------------|
| Burra & Goyder – Burra | 08 8892 2154 |
| Clare Valley – Clare | 08 8842 2131 |

EYRE PENINSULA

| | |
|--------------|--------------|
| Elliston | 08 8687 9200 |
| Port Lincoln | 08 8621 2360 |
| Whyalla | 08 8645 7900 |

FLEURIEU PENINSULA

| | |
|--|--------------|
| Fleurieu Coast – Yankalilla | 08 8558 0240 |
| Goolwa | 08 8555 7248 |
| McLaren Vale & Fleurieu – McLaren Vale | 08 8323 9944 |
| Strathalbyn | 1300 466 592 |
| Victor Harbor | 08 8551 0777 |

FLINDERS RANGES & OUTBACK

| | |
|-------------------------|--------------|
| Coober Pedy | 08 8672 4617 |
| Flinders Ranges – Quorn | 08 8620 0510 |
| Hawker | 08 8648 4022 |
| Peterborough | 08 8651 3355 |
| Port Augusta – Wadlata | 08 8641 9194 |
| Port Pirie | 08 8633 8700 |
| Roxby Downs | 08 8671 5941 |
| Wilpena Pound | 08 8648 0048 |

KANGAROO ISLAND

| | |
|-----------|--------------|
| Penneshaw | 0417 551 444 |
|-----------|--------------|

LIMESTONE COAST

| | |
|----------------------------|--------------|
| Bordertown | 08 8752 1044 |
| Mount Gambier | 1800 087 187 |
| Naracoorte | 08 8762 1399 |
| Penola/Coonawarra – Penola | 08 8737 2855 |
| Robe | 08 8768 2465 |

MURRAY RIVER, LAKES & COORONG

| | |
|---------------|--------------|
| Mannum | 08 8569 1303 |
| Murray Bridge | 08 8539 1142 |

RIVERLAND

| | |
|------------------------------|--------------|
| Barmera | 08 8588 2289 |
| Berri | 08 8582 5511 |
| Loxton | 08 8584 8071 |
| Renmark Paringa – Renmark | 08 8580 3060 |
| Waikerie District – Waikerie | 08 8541 0720 |

YORKE PENINSULA

| | |
|-----------------------|--------------|
| Ardrossan | 08 8837 4195 |
| Copper Coast – Kadina | 08 8821 2333 |



DOWNLOAD OUR SIX
ROAD TRIP MAPS HERE
SOUTH AUSTRALIA.COM/ROADTRIPS



SCAN THIS CODE FOR SA VISITOR
INFORMATION CENTRE LOCATIONS





Great Beer | Great Food | Great Times

107 Ruwoldt Road, Yahl, South Australia
Mount Gambier

M: 0412 717 764

www.littlerippabrewingco.com.au

